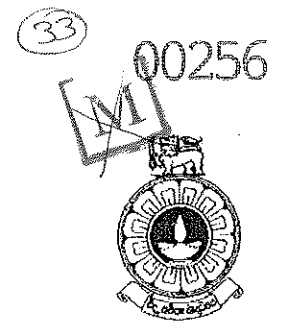


The Open University of Sri Lanka
Faculty of Engineering Technology
Department of Textile and Apparel Technology



| | |
|------------------------------|---|
| Study Programme | : Bachelor of Industrial Studies Honours |
| Name of the Examination | : Final Examination |
| Course Code and Title | : TAI3540/TTI3240 Pattern construction |
| Academic Year | : 2017/18 |
| Date | : 18 th January 2019 |
| Time | : 0930-1230hrs |
| Duration | : 3 hours |

General Instructions

1. Read all instructions carefully before answering the questions.
2. This question paper consists of **seven (7)** questions in **three (3)** pages.
3. Answer five (5) questions including the question 1, which is compulsory. All questions carry equal marks.
4. Answer for each question should be commenced from a new page.
5. This is a Closed Book Test (CBT).
6. Answers should be in clear hand writing.
7. Do not use red colour pens.

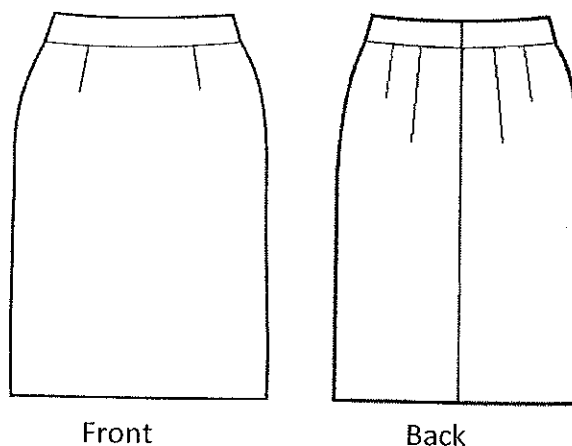
Compulsory Question

- (1) (a) Explain the two main methods of pattern construction. (4 Marks)
- (b) What are the body measurements required to construct patterns for a gent's trouser? (3 Marks)
- (c) With the help of rough sketches, explain the correct method of taking the body measurements you mentioned in part (b) from a male figure. (6 Marks)
- (d) Explain with five (5) examples, the importance of giving pattern specifications along with the drafted patterns. (5 Marks)
- (e) Write four (4) factors, which can be used to categorize size charts. (2 Marks)

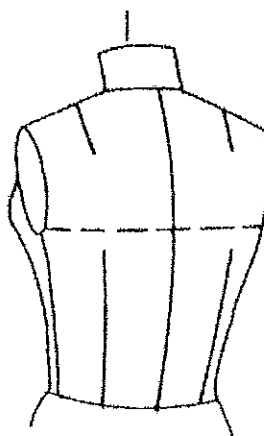
Answer any four (4) questions from the following (6) questions.

- (2) A production sketch of a ladies basic skirt is given below. With the help of rough sketches, explain the method of constructing the front and the back patterns for this skirt.

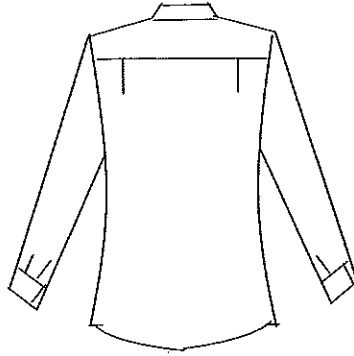
(20 Marks)



- (3) With rough sketches, explain the method of constructing the back pattern of the basic bodice block, shown in the figure. (20 marks)

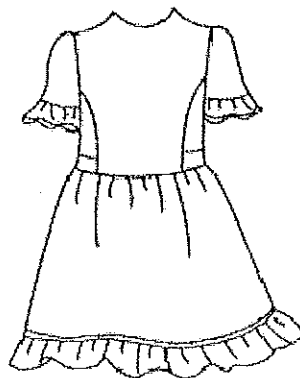


- (4) (a) What are the measurements required to construct the pattern for a women's basic sleeve? (3 Marks)
- (b) Explain the method of constructing the pattern for the women's basic sleeve with the help of the front and back armhole curves of the bodice pattern. (17 Marks)
- (5) Following sketch shows the back view of a gent's tunic shirt.

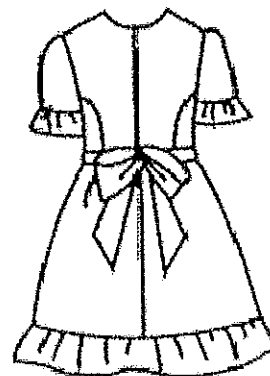


Using rough sketches, state the steps should be followed by a pattern maker to construct the following patterns of the above given shirt style.

- (a) Back pattern (12 Marks)
- (b) Sleeve pattern (8 Marks)
- (6) (a) Draw a production sketch of a gent's basic trouser. (2 Marks)
- (b) Name all the style features of the trouser style you sketched in part (a). (2 Marks)
- (c) With rough sketches, explain how the front pattern of the trouser is constructed for the trouser style you sketched in part (a). (16 Marks)
- (7) Explain the method of constructing the front and the back patterns for the baby frock given in the following sketch. (20 Marks)



Front



Back

