

THE OPEN UNIVERSITY OF SRI LANKA  
FACULTY OF HEALTH SCIENCES  
DEPARTMENT OF BASIC SCIENCES  
ACADEMIC YEAR 2020/2021 – SEMESTER I



BACHELOR OF PHARMACY HONOURS  
BACHELOR OF MEDICAL LABORATORY SCIENCES HONOURS  
BSU3230 - HUMAN ANATOMY – LEVEL 3  
CONTINUOUS ASSESSMENT II (NBT II) DURATION: 1 HOUR

DATE: 6<sup>th</sup> JANUARY 2022.

TIME: 9.00 AM – 10.00 AM

REGISTRATION NO: .....

**IMPORTANT INSTRUCTIONS/ INFORMATIONS TO CANDIDATES**

- This question paper consists of **13 pages** with **20 Multiple Choice Questions (Part A)** and **02 Structured Essay Questions (Part B)**.
- Write your Registration Number in the space provided.
- Answer **ALL** questions.
- **Multiple Choice Questions (Part A):** Indicate answers in the answer sheet provided by placing a cross (X) in **INK** in the relevant cage. (Answers in pencil will **NOT** be marked)
- **Structured Essay Questions (Part B):** Write answers within the space provided.
- Do not remove any page/part of this question paper from the examination hall.
- Mobile phones and any other electronic equipment are **NOT** allowed. Leave them outside.
- Please fill the address sheet (See last page).

**BACHELOR OF PHARMACY HONOURS**  
**BACHELOR OF MEDICAL LABORATORY SCIENCES HONOURS**  
**BSU3230 - HUMAN ANATOMY – LEVEL 3**  
**CONTINUOUS ASSESSMENT II (NBT II)**

REGISTRATION NO:.....

**ANSWER SHEET FOR PART A**

Q. No.	(a)	(b)	(c)	(d)
1				
2				
3				
4				
5				
6				
7				
8				
9				
10				
11				
12				
13				
14				
15				
16				
17				
18				
19				
20				

REGISTRATION NO: .....

---

**Part A – Multiple Choice Questions***(20 marks)*

---

Choose the most suitable/ best answer and indicate with a 'X' in the answer sheet provided.

1. A posterior pituitary hormone is
  - a. growth hormone
  - b. luteinizing hormone
  - c. oxytocin
  - d. prolactin
  
2. Which one of the following is **not** a true endocrine organ?
  - a. Thyroid gland
  - b. Anterior pituitary
  - c. Posterior pituitary
  - d. Adrenal gland
  
3. The epithelium lined the ureter and bladder is
  - a. pseudostratified columnar epithelium
  - b. transitional epithelium
  - c. simple columnar epithelium
  - d. simple cuboidal epithelium
  
4. Which one of the following is **correct** regarding urinary system?
  - a. Bladder infections are more common in males than in females
  - b. Skeletal muscles contract to move fluids through the urethra
  - c. In males, the urethra acts as a passageway for both urine and mucus
  - d. The external urethral sphincter consists of skeletal muscles, which is under voluntary control
  
5. The function of the seminiferous tubules is the
  - a. synthesis of spermatozoa
  - b. maturation of spermatozoa
  - c. storage of spermatozoa
  - d. transport of spermatozoa

6. The semen is
  - a. the secretions from the seminal vesicles
  - b. the secretions from the prostate gland
  - c. a collection of spermatozoa
  - d. a collection of above all
  
7. Which one of the following is **incorrect** regarding the uterine wall?
  - a. The endometrium is made up of epithelial tissue which has a rich blood supply
  - b. The middle layer is a thick layer of smooth muscle which are used during childbirth to force the baby
  - c. The smooth muscle layer nourishes the foetus during development
  - d. The outer connective tissue layer helps to anchor the uterus in position within the abdomen
  
8. Which one of the following muscles is **not** categorized as a rotator cuff muscles in the shoulder joint?
  - a. Supraspinatus
  - b. Infraspinatus
  - c. Teres minor
  - d. Deltoid
  
9. A muscle in the abdominal wall is known as
  - a. internal intercostal
  - b. pectoralis major
  - c. rectus abdominis
  - d. deltoid
  
10. A structure/area involves with sensation of smell includes
  - a. nostrils
  - b. nasopharynx
  - c. olfactory region
  - d. sphenoid sinus
  
11. The shaft of a long bone is known as
  - a. periosteum
  - b. diaphysis - T
  - c. epiphysis
  - d. central cavity

12. The function of red bone marrow is to
- produce the components of blood
  - store fat
  - replace the bone
  - renew the bone
13. The thin filaments in skeletal muscle sarcomeres are made of
- myosin
  - actin
  - collagen
  - keratin
14. Which one of the followings is **correct** regarding the free movement in synovial joints?
- The ends of the bones are covered with a smooth fibrous cartilage
  - The ends of the bones are protected with a ligament
  - The joint is lubricated by a thick fluid called cerebrospinal fluid
  - The joint is enclosed by a flexible articular capsule
15. Select the **incorrect** statement regarding the cerebrospinal fluid (CSF).
- It is produced in the spinal cord
  - It is a watery filtrate, formed from blood
  - It is constantly being formed and later reabsorbed back into the blood
  - It helps to nourish these tissues and to remove waste
16. The white matter of the brain is composed of
- bundles of axons
  - cell bodies of neurons
  - dendrites of neurons
  - bundles of neurons
17. Which one of the following is correct regarding the blood supply to the spinal cord?
- The posterior column of the spinal cord is supplied by the anterior spinal artery
  - The posterior grey matter of the spinal cord is supplied by the posterior spinal artery
  - The corticospinal tracts are supplied by the posterior spinal artery
  - The spinothalamic tracts are supplied by the posterior spinal artery

18. Which one of the followings is an effect of parasympathetic nervous system?
- a. Constriction of pupil
  - b. Increase of heart rate
  - c. Reduction of blood flow to intestines
  - d. Increase of air supply to lungs
19. Photoreceptors are **absent** in the
- a. retina
  - b. blind spot
  - c. fovea centralis
  - d. iris
20. Which one of the following is **not** a part of the inner ear?
- a. Labyrinth
  - b. Endolymph
  - c. tympanic membrane
  - d. Perilymph



.....

.....

.....

.....

.....

.....

c) Draw and label the parts of a nephron.

(10 marks)





.....

.....

.....

.....

.....

2) a) List the muscles that form the anterior abdominal wall (3 marks)

.....

.....

.....

.....

b) List **four (04)** types of synovial joints and give **one (01)** example for each type. (8 marks)

.....

.....

.....

.....

.....

c) List **three (03)** axes of rotation of the shoulder joint. (03 marks)

.....

.....

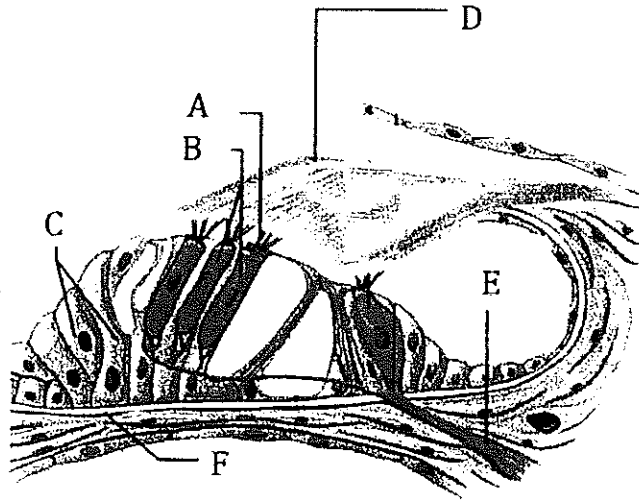
.....

.....

.....



f) Name the structures labelled (A – F) in the diagram of organ of corti. (6 marks)



A - .....

D - .....

B - .....

E - .....

C - .....

F - .....