

The Open University of Sri Lanka  
 Faculty of Engineering Technology  
 Department of Mechanical Engineering



Study Programme	:Bachelor of Technology Honours in Engineering
Name of the Examination	:Final Examination
Course Code and Title	:DMK5501/MEK5201–Computer Aided Drafting and Modelling
Academic Year	:2019/2020
Date	:25 <sup>th</sup> July 2020
Time	:9.30 hrs.-12.30 hrs.
Duration	:3 hours

### General Instructions

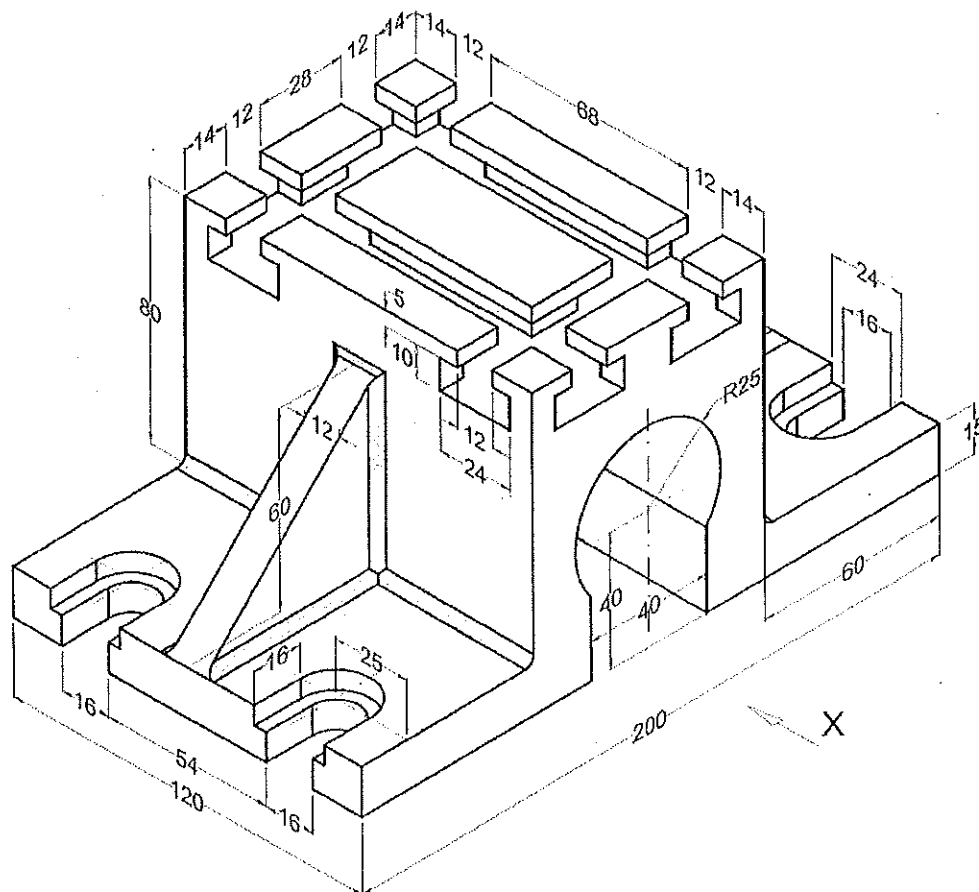
1. Read all instructions carefully before answering the questions.
2. Clarify from the supervisor / Invigilator in your examination hall if you have any doubts.
3. Draw the standard cage and fill the title cage clearly for answers.
4. Save the drawings periodically to prevent data loss.
5. Do not write your name.
6. **Write down your index number in the title cage.**
7. Save and name your final drawing by your index number in the pen drive given by the supervisor / Invigilator.
8. Drawings saved in the pen drive are considered as the final answer.
9. **Assume any missing dimensions.**

### Q1.

- I. Construct the solid model of the object described by **Figure 01** using **AutoCAD** software.
- II. From the solid model, generate the following views to a scale of full size in the first angle projection.
  - a) Front Elevation looking in the direction of arrow X.
  - b) End Elevation projected to the right of view (a).
  - c) Plan view
  - d) Name views, show hidden details and indicate major dimensions.

**Note:-**

- All dimensions are in millimetres and the drawings are not in the actual scale.
- Radii of casting curves may be taken as 3 mm unless otherwise specified.
- Paper size and scale are to be selected according to your preference. Prepare the cage for the drawing accordingly.
- Title of the drawing should appear as 'FINAL EXAMINATION'.
- Projection symbol should appear on the lower right corner of the cage.
- **Marks are given for the approach, organization of the drawing, overall views, setting of dimension styles, titles and the Standard cage.**

**Figure - 01**

10

PRINT YOUR COURSE CODE  
(Eg. MEK3289/MEK5201/MEK3234)

5

PAPER SIZE 594 X 420 mm

25

PRINT YOUR INDEX NUMBER

14

SCALE

9

7

PRINT THE MAIN TITLE AS GIVEN IN  
ASSIGNMENT / QUESTION

PRINT THE APPROPRIATE SYMBOL  
FOR ORTHOGRAPHIC PROJECTION  
OTHERWISE LEAVE IT EMPTY

PRINT THE MAIN SCALE  
(Eg. 1:2)

35

40

60

30

40

INDEX NO:

67

COURSE

CORRECTED

