

The Open University of Sri Lanka  
Faculty of Engineering Technology  
Department of Textile and Apparel Technology



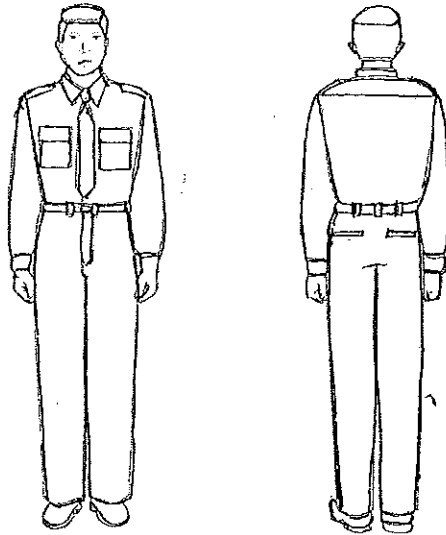
Study Programme	: Bachelor of Industrial Studies Honours
Name of the Examination	: Final Examination
<b>Course Code and Title</b>	<b>: TAI3533/TAI3540/TTI3240 Pattern Construction</b>
Academic Year	: 2019/2020
Date	: 14 <sup>th</sup> October 2020
Time	: 0930-1230hrs
Duration	: <b>3 hours</b>

### General Instructions

1. Read all instructions carefully before answering the questions.
  2. This question paper consists of **seven (7)** questions in **four (4)** pages.
  3. Answer five (5) questions including the question 1, which is compulsory. All questions carry equal marks.
  4. Answer for each question should be commenced on a new page.
  5. This is a Closed Book Test (CBT).
  6. Answers should be in clear hand writing.
  7. Do not use red colour pens.
-

### Compulsory Question

- (1) Following is a production sketch of a men's dress. Answer the questions from (a) to (e) referring to the given sketch.

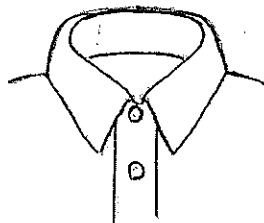


- (a) What are the style features of this men's dress? (4 Marks)
- (b) Name all the required pattern pieces to manufacture this dress. (6 Marks)
- (c) Name six (6) body measurements required to construct patterns for this dress. (3 Marks)
- (d) Explain how do you take measurements with rough sketches reference to three (3) body measurements in part (c). (3 Marks)
- (e) Explain the two main methods of pattern construction which are practiced by pattern makers. (4 Marks)

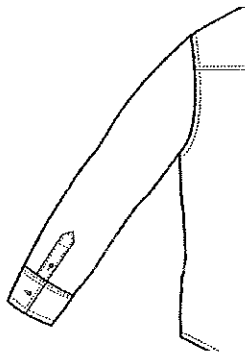
### Answer any four (4) questions from the following (6) questions.

- (2) (a) Draw a production sketch of a basic skirt. (2 Marks)
- (b) Explain how do you take body measurements required to construct the front and back patterns sketched in part (a). (4 Marks)
- (c) Explain the method of construction with rough sketches for the back pattern in part (a). (14 Marks)

- (3) (a) Explain with rough sketches the method of constructing the front pattern of a basic bodice block. (12 Marks)
- (b) Explain the steps to be followed to construct the front pattern of a one piece dress with the help of the front pattern drafted in part (a). (8 Marks)
- (4) (a) Explain the method of construction with rough sketches for collar stand and collar fall patterns of the two piece collar shown in the following figure. (12 Marks)



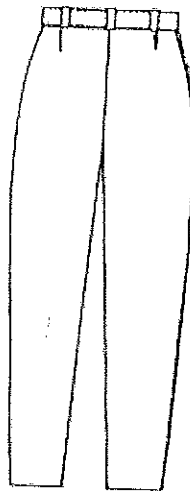
- (b) Following sketch shows a men's long sleeve shirt with cuff and placket opening. Explain the method of construction with rough sketches for the long sleeve. (8 Marks)



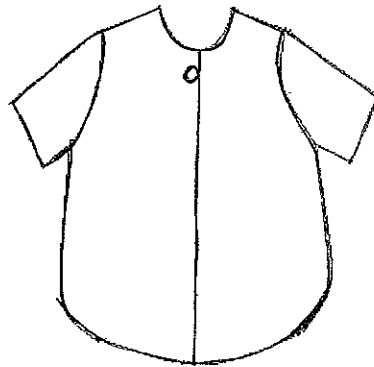
- (5) (a) Draw a front view of men's tunic shirt. (3 Marks)
- (b) What are the measurements required to draft the front pattern of the shirt style you have drawn in part (a)? (3 Marks)
- (c) Explain the method of construction with rough sketches for the front pattern of the tunic shirt you sketched in part (a). (14 Marks)

(6) Explain in detail how to construct the back pattern for the trouser style shown below.

(20 Mark)



(7) Following sketch shows the front view of a baby shirt.



(a) What are the measurements required to construct front and sleeve patterns of this shirt? (3 Marks)

(b) Explain the method of construction with rough sketches for the following patterns of this baby shirt.

- (i) Front pattern (10 Marks)
- (ii) Sleeve pattern (7 Marks)