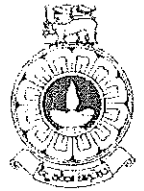


The Open University of Sri Lanka
Faculty of Engineering Technology
Department of Textile and Apparel Technology



Study Programme	: Bachelor of Technology Honours in Engineering
Name of the Examination	: Final Examination
Course Code and Title	: TAX4462/TAX5560/TTX5260 Pattern Development
Academic Year	: 2019/2020
Date	: 10 th August 2020
Time	: 1330-1630hrs

General Instructions

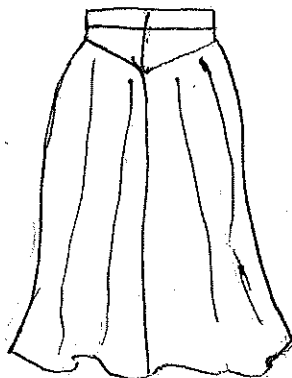
1. Read all instructions carefully before answering the questions.
 2. This question paper consists of **seven (7)** questions in **four (4)** pages.
 3. Answer five (5) questions including the question 1, which is compulsory. All questions carry equal marks.
 4. Answer for each question should be commenced from a new page.
 5. This is a Closed Book Test (CBT).
 6. Answers should be in clear handwriting.
 7. Do not use red colour pens.
-

Compulsory Question (20 Marks)

- (1) (a) What are the three basic requirements to construct patterns? (3 Marks)
- (b) Briefly explain the difference between pattern drafting and pattern manipulation. (2 Marks)
- (c) Write three (3) examples each for horizontal and vertical body measurements. (3 marks)
- (d) How do you categorize size charts? Explain. (2 Marks)
- (e) Name three (3) aspects, that designer needs to consider when designing a garment for a person. (3 Marks)
- (f) What do you indicate by a grain line? (3 Marks)
- (g) What are the two key conditions that you should follow in order to take accurate body measurements from a human figure? (2 Marks)
- (h) Name four (4) basic tools, which are widely used by pattern makers when constructing patterns. (2 Marks)

Answer any four (4) questions from the following (6) questions

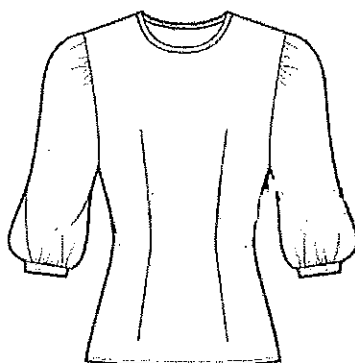
- (2) Below is a front side of a skirt style having a waist band and a yoke. A flare is given at the bottom part.



Explain the pattern drafting process for the front patterns with suitable sketches.

(20 Marks)

- (3) (a) What are the body measurements essential for drafting front and back patterns of a basic bodice block? (4 Marks)
- (b) Explain the method of drafting the basic front pattern for the bodice block. (10Marks)
- (c) Explain how you develop the front pattern for the blouse style shown below using drafted basic pattern. (6 Marks)



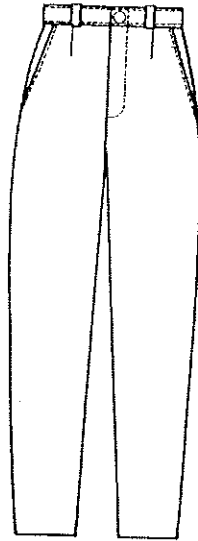
- (4) (a) How do you develop basic sleeve by given basic front and back bodice block patterns? Use suitable sketches to explain your answer. (10 Marks)
- (b) How do you develop sample pattern for the sleeve style given below from the basic sleeve pattern. Elaborate the process by suitable sketches. (10 Marks)



- (5) (a) Draw the production sketch of a basic tunic shirt. (3 Marks)
- (b) Explain the method of constructing the front and back patterns of the tunic shirt for the production sketch provided in part (a). Use suitable sketches where necessary. (17 Marks)

(6) Explain in detail how to construct the front pattern for the trouser shown below.

(20 Mark)



(7) Explain how basic skirt front pattern is graded to size 10 and 14, from the size 12 master pattern with appropriate sketches. Use the measurement chart given below.

(20 Marks)

General size chart for skirt

Size	10	12	14
Waist	62	66	70
Hip	89	93	97
Waist to knee	57	58	59
Waist to hip	21.25	21.5	21.75
Width of Bust Prominence	18.6	19	19.4