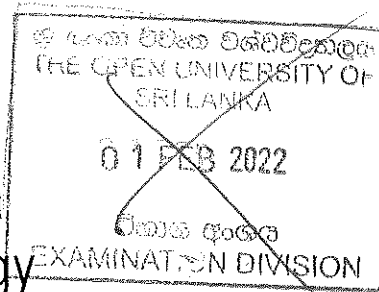


The Open University of Sri Lanka

Faculty of Engineering Technology



00025



Study Programme	: Bachelor of Technology Honours in Engineering
Name of the Examination	: Final Examination
Course Code and Title	: DMX4201 – Advanced Engineering Design Graphics
Academic Year	: 2020/21
Date	: February 01, 2022
Time	: 09.30 – 12.30
Duration	: 3 hours

General Instructions

1. Read all instructions carefully before answering the questions.
2. Clarify from the supervisor / Invigilator in your examination hall if you have any doubts.
3. Draw the standard cage and fill the title cage clearly for answers.
4. Save drawings periodically to prevent data loss.
5. Do not write your name.
6. **Write down your index number in the title cage.**
7. Save the answers as Question number followed by the registration number in the pen drive provided by the supervisor / invigilator [**EX: Q2_219233455**].
8. Drawings saved in the pen drive are considered as the final answer.
9. Assume any missing dimensions.

Note:-

- All dimensions are in millimetres and the drawings are not in the actual scale.
- Radii of casting curves may be taken as 6 mm unless otherwise specified.
- Paper size and scale are to be selected according to your preference. Prepare the cage for the drawing accordingly.
- **Marks are given for the approach, organization of the drawing, overall views, setting of dimension styles, titles and the Standard cage.**

Q1. Construct the solid model of the **object** shown in Figure Q1, described by **Figure-01 to Figure-05**.

Q2. Generate the following views from the solid model in first angle projection.

- a) Sectional Front Elevation on X-X
- b) End Elevation projected to the right of view (a)
- c) Plan

Insert dimensions and title block.

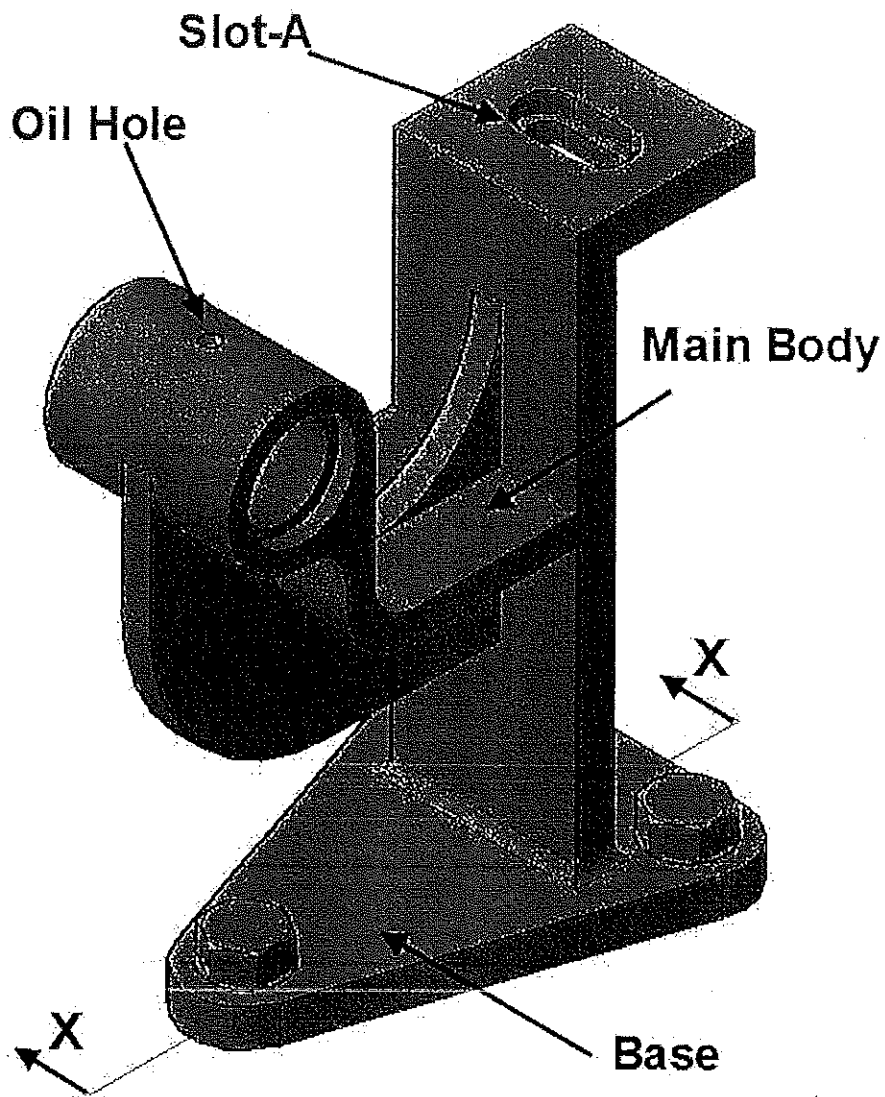


Figure Q1

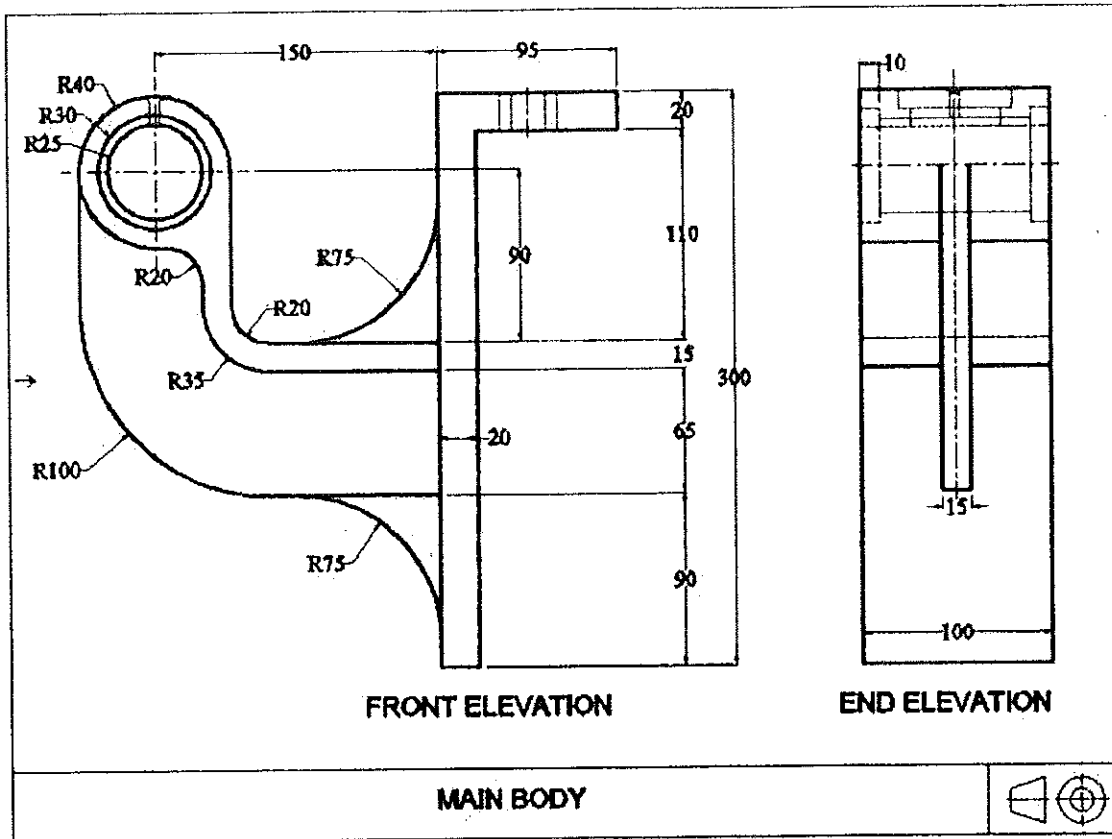


Figure-01

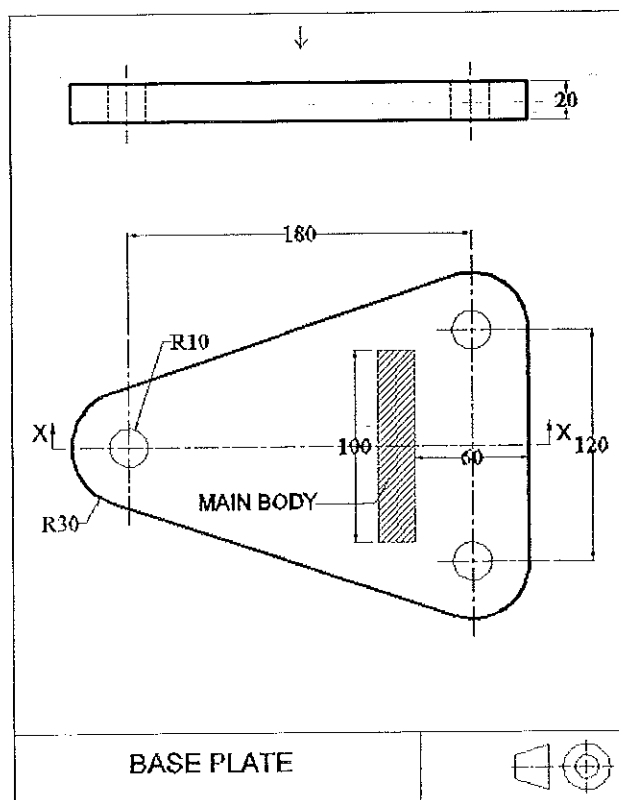


Figure-02

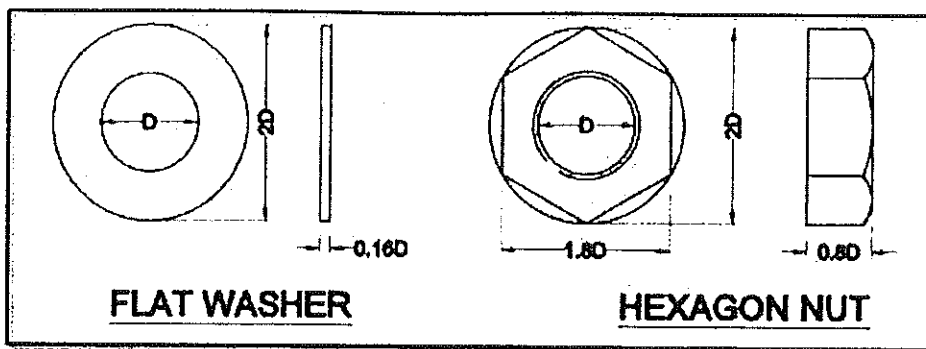


Figure 03

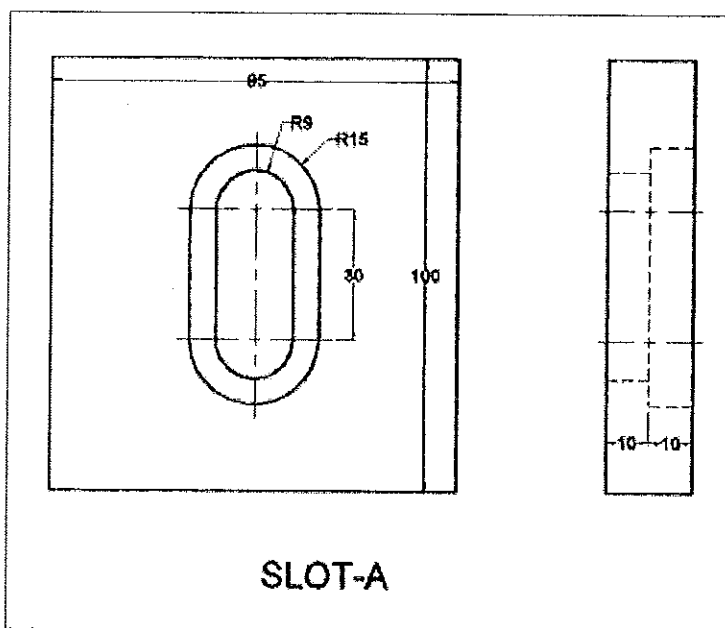


Figure 04

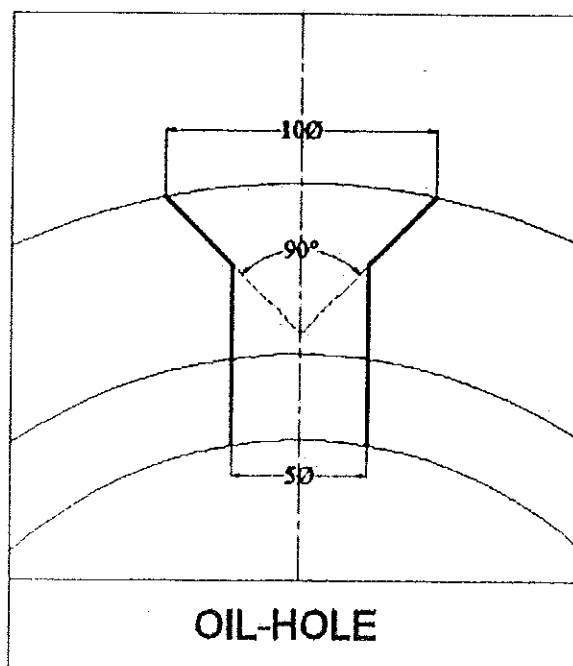


Figure 05