

The Open University of Sri Lanka
Faculty of Engineering Technology
Department of Textile and Apparel Technology



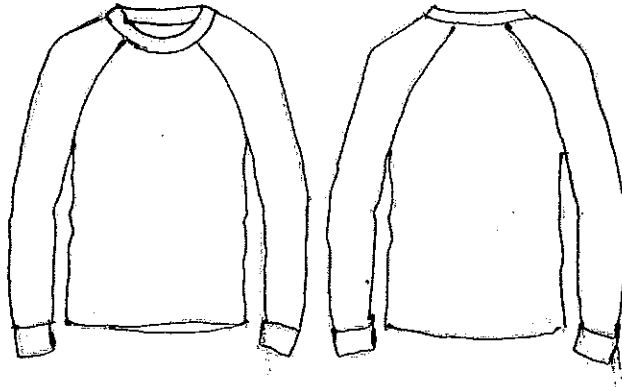
Study Programme	: Bachelor of Industrial Studies Honours
Name of the Examination	: Final Examination
Course Code and Title	: TAI4442 Advanced Pattern Construction
Academic Year	: 2020/2021
Date	: 10 th February 2022
Time	: 0930-1230 hrs
Duration	: 3 hours

General Instructions

1. Read all instructions carefully before answering the questions.
 2. This question paper consists of **seven (7)** questions in **five (5)** pages.
 3. Answer five (5) questions including the question 1, which is compulsory. All questions carry equal marks.
 4. Answer for each question should be commenced from a new page.
 5. This is a Closed Book Test (CBT).
 6. Answers should be in clear handwriting.
 7. Do not use red colour pens.
 8. Write the index number in each answer script.
-

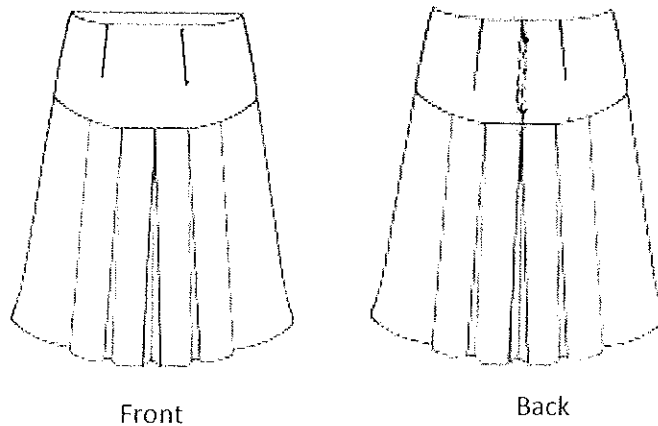
Compulsory Question

- (1) Generally, men's wear are the garments worn as loose fitted garments and having less style variations compared to women's garments. Following sketches show a men's shirt finished with a sleeve style. Assuming that the basic patterns for front, back and sleeve are provided, explain with clear sketches how to construct the pattern for the sleeve style shown in this diagram. (20 Marks)



Answer any four (4) questions from the following (6) questions

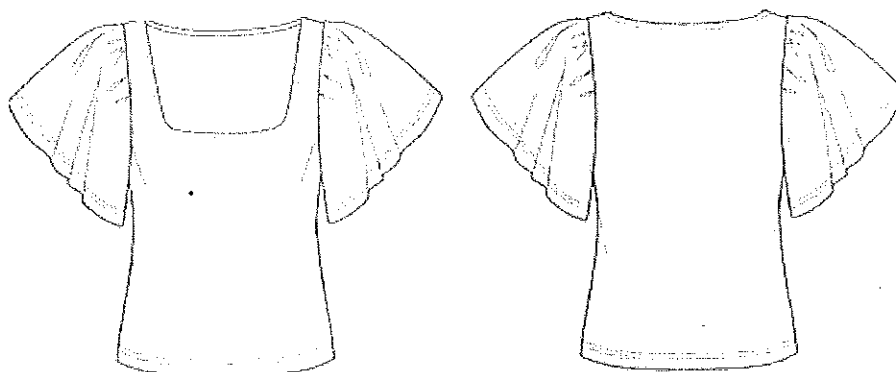
- (2) The skirt style shown in the below diagram is decorated with a yoke at front and back and pleat style below the yoke panel. If the basic skirt front and back patterns are given, explain the method of constructing patterns for full garment. You may use clear diagrams to explain the answer.



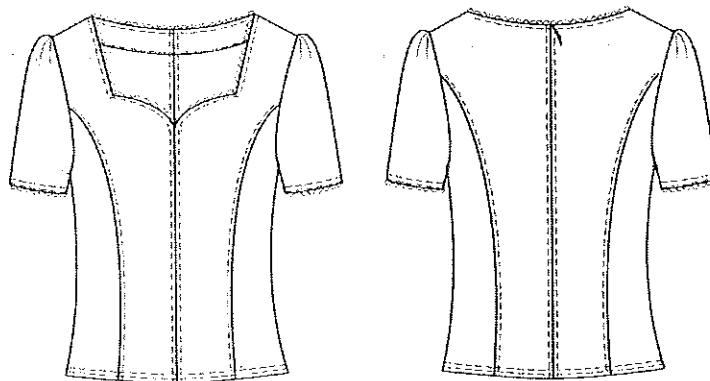
(20 Marks)

- (3) The blouse style shown in the below diagram is decorated with a deep neck line and having the sleeve style with flare at the sleeve hem. The hem of the blouse is slightly below the actual waist line. Starting from the basic front and back bodice patterns and the basic sleeve pattern, explain the construction steps to develop following patterns.

- (a) Front pattern (6 Marks)
 (b) Back pattern (6 Marks)
 (c) Sleeve pattern (8 Marks)

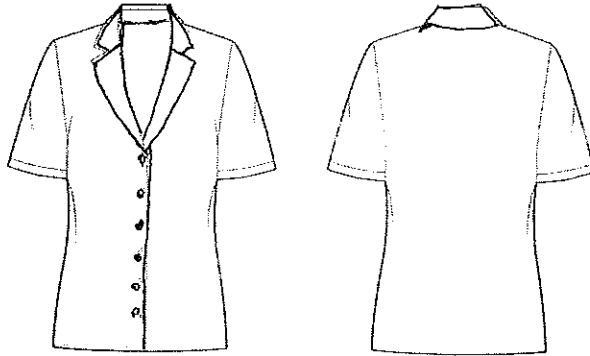


- (4) Study the style features of the blouse style given in the below diagram. Explain the method of constructing complete pattern set with suitable sketches. You may assume that the basic patterns of front, back and the sleeve are provided.



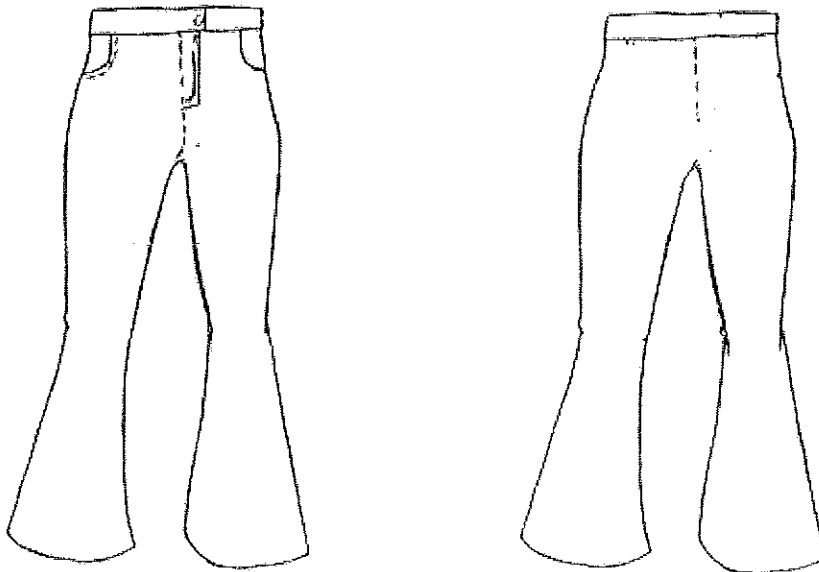
(20 Marks)

- (5) Introduction of collars give different looks to women wear. Following sketches show one such commonly used collar styling. If the basic front and back bodice patterns are given, explain with rough sketches the method of constructing the collar pattern for this garment.



(20 Marks)

- (6) Trousers style given below is having a bell shape below the knee level. Explain the construction steps to develop all the patterns for the trousers style. Assume that the basic trouser top and bottom patterns are given.



Front

Back

(20 Marks)

(7) Grading is the method used to get the different sizes from master pattern for complete size range.

Draw a rough sketch of a front basic skirt pattern and explain the method of grading pattern for size 16, assuming that the master pattern is size 14. Use the measurement chart given below for the grading purposes.

Measurement chart (cm)

Size	14	16
Waist	76	80
Hip	82	86
Waist to hip	23.4	24.4
Skirt length	61	62
Width of bust prominence	19	19.4

(20 Marks)

