

THE OPEN UNIVERSITY OF SRI LANKA
FACULTY OF HEALTH SCIENCES
DEPARTMENT OF NURSING
ACADEMIC YEAR 2020/2021 – SEMESTER I



BACHELOR OF SCIENCE HONOURS IN NURSING
NGU5303- RESEARCH METHODS IN NURSING - LEVEL 5
FINAL EXAMINATION

DATE: 09TH MARCH 2022

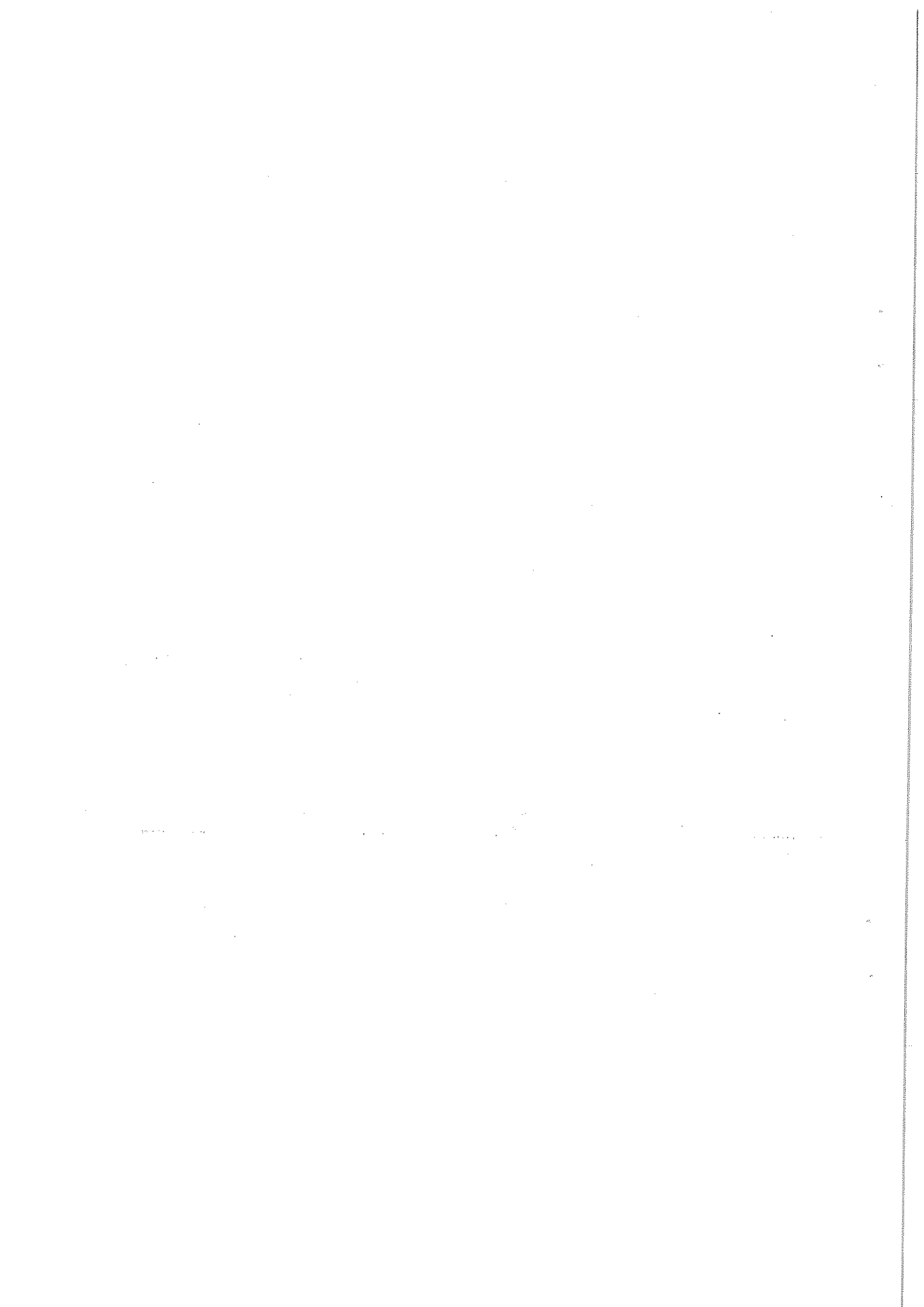
TIME: 9.30AM- 12.30PM

INDEX NO:

Part B - Matching Questions (10 Marks)

Match the words/phrases given in the left column with one of the most relevant phrases given in the right. Indicate the letter corresponding to your response in the given space on the left.

Left	Right
1. Hypotheses that can be tested ()	A. Internal validity
2. Hypotheses that cannot be tested ()	B. Empiricism
3. Evidence gathered through human senses ()	C. Case-control studies
4. An area of research interest ()	D. Experience and interest
5. The results are reproduced if the research repeated under similar conditions ()	E. Cohort studies
6. Source of research problem ()	F. Cross-sectional studies
7. Degree to which extraneous influences have been eliminated to identify relationships ()	G. Alternate hypothesis
8. Extent to which findings of a study can be generalized to other settings ()	H. Null hypothesis
9. Collect data at a single point in time ()	I. Reliability
10. Collect data over a period of time prospectively ()	J. Nursing characteristics
	K. External validity
	L. Replicability



Part C - Short Answer Questions (40 Marks)

Q1:

Answer the following questions using the given hypothesis “Spirituality and religiosity are associated with psychological status in patients with chronic obstructive pulmonary disease”.

1.1 State the independent and dependent variable of the above hypothesis. **(2 Marks)**

	Variable type	Variable
1.	Independent variable	
2.	Dependent variable	

1.2 Write two (02) possible extraneous variables that could influence the above mentioned hypothesis. **(2 Marks)**

- a.
- b.

1.3 Classify the above hypothesis stating whether it is,
 i) simple or complex ii) associative or causal iii) directional or non-directional iv) research or null (statistical) **(4 Marks)**

	Category	Type of hypothesis
a.	simple or complex	
b.	associative or causal	
c.	directional or non-directional	
d.	research or null (statistical)	

(Total = 08 Marks)

INDEX No.....

Q2:

2.1 Write **two (02)** advantages of qualitative research. **(2 Marks)**

- a.
.....
.....
- b.
.....
.....

2.2 Write **two (02)** disadvantages of qualitative research. **(2 Marks)**

- a.
.....
.....
- b.
.....
.....

2.3 List **three (03)** aspects of rigor that would be assessed in qualitative research. **(3 Marks)**

- a.
- b.
- c.

(Total = 07 Marks)

Q3:

Nurses working in Covid-19 hospitals are exposed to various stressors and such stress and high workload lead to burnout. Imagine that you are working in a Covid -19 ward in the Base Hospital
A. As an undergraduate nurse, you are interested in conducting a study to identify the level of burnout and its predictors in nurses treating for Covid-19 patients in your hospital. A list of staff nurses working in this hospital is available to you.

3.1 Write the research problem for the above study. **(1 Mark)**

.....
.....
.....

3.2 Write the purpose of the study. **(1 Mark)**

.....
.....
.....

3.3 State the best research approach and research design for the proposed study.

Research approach-..... **(1 Mark)**

Research design- **(1 Mark)**

3.4 State the best sampling technique to recruit the sample for the proposed study. **(1 Mark)**

.....

3.5 Justify the selected sampling technique for the above study. **(2 Marks)**

.....
.....
.....

INDEX No.....

3.6 You have developed a questionnaire to collect data for the proposed study.

3.6.1 State **two (02)** strengths of a questionnaire. **(2 Marks)**

a.
.....
.....

b.
.....
.....

3.6.2 State **two (02)** weaknesses of a questionnaire. **(2 Marks)**

a.
.....
.....

b.
.....
.....

3.7 Briefly mention how you would determine content validity of the above questionnaire. **(2 Marks)**

.....
.....
.....

3.8 State **two (02)** possible measurement errors that can occur due to administration of a questionnaire. **(2 Marks)**

a.
b.

(Total = 15 Marks)

Q4:

Read the following abstract and publication details and answer the questions given below.

Title: Factors influencing self-management among Indonesian patients with early-stage chronic kidney disease: A cross-sectional study
Authors: Ira Suarilah and Chiuchu Lin
First published: 17 August 2021
Journal name: Journal of Clinical Nursing
Volume: 31
Issue: 6
Pages: 703 - 715
DOI: <https://doi.org/10.1111/jocn.15930>

Abstract

Health literacy, illness perception and self-efficacy have been shown to be key determinants of behaviour change and improved adherence to chronic kidney disease (CKD) self-management recommendations. However, the relevance of these factors in working age individuals diagnosed with early-stage CKD is not well characterised. The purpose of this study was to investigate the self-management of patients with early-stage CKD and its influencing factors.

A convenience sample of 226 patients with early-stage CKD was recruited from 63 Public Health Centers in Indonesia, from June to September 2020. Health literacy, illness perception, self-efficacy and self-management were assessed using self-reported questionnaires. Cronbach's alpha coefficients of these instruments were 0.87, 0.81, 0.79 and 0.68 respectively. Data were analysed by SPSS version 25 using multiple linear regression analysis.

The average scores for health literacy, illness perception, self-efficacy and self-management were 32.11 (SD = 4.46), 4.57 (SD = 1.46), 183.64 (SD = 38.23) and 76.92 (SD = 9.45), respectively. The influencing factors were education level, monthly income, family history of comorbidity, health literacy and self-efficacy, which accounted for 45% of total variation in self-management score.

Health literacy was found to influence all dimensions of self-management: self-integration, problem-solving, seeking social support and adherence to the recommended regimen. Adherence to the recommended regimen is the most challenging dimension of CKD self-management. Improving health literacy and motivation of patients with early-stage CKD may help sustain positive illness perception and self-efficacy, and improve self-management.

4.1 What is the population being studied in this study?

(1 Mark)

.....

INDEX No.....

4.2 What is the sampling technique used in this study? (1 Mark)

.....

4.3 Write two (02) advantages of sampling technique used in this study. (2 Marks)

a.

.....

b.

.....

4.4 Write one (01) disadvantage of sampling technique used in this study. (1 Mark)

a.

.....

4.5 Which aspect of the questionnaire was measured by Cronbach's alpha coefficients? (1 Mark)

.....

4.6 State how the researchers have analysed the data. (1 Mark)

.....

.....

4.7 Which scale of measurement is used to measure health literacy score? (1 Mark)

.....

4.8 Write the reference of this article according to APA style using the publication details provided. (2 Marks)

.....

.....

.....

(Total=10 Marks)

INDEX No.....

Part D - Short Essay Questions (20 Marks)**Q1:**

Nursing Profession is developing with the advancement of research worldwide. However, in Sri Lanka, development of nursing research progresses slowly due to various challenges. Briefly discuss the challenges that Sri Lankan nurses encounter when conducting nursing research.

(10 Marks)**Q2:**

Briefly explain how you would adhere to ethical standards when designing a research involving people.

(10 Marks)

0051