

BACHELOR OF PHARMACY HONOURS  
FMU4205 – COMMUNITY PHARMACY– LEVEL 4  
FINAL EXAMINATION  
DURATION: TWO (02) HOURS

---

DATE: 11<sup>TH</sup> OCTOBER 2022

TIME: 09.30 A.M. – 11.30 A.M.

---

**Part B – Short Answer Questions (20 Marks)**

01.

1.1 Write two (02) factors that need to be considered when ordering medical devices for your community pharmacy for the first time. (02 marks)

I. ....

II. ....

1.2 State three (03) main factors to be checked when drugs are received at the quarantine area.

(03 marks)

I. ....

II. ....

III. ....

1.3 Write three (03) advantages of having Standard Operating Procedures (SOPs) in a pharmacy. (03 marks)

I. ....

II. ....

III. ....

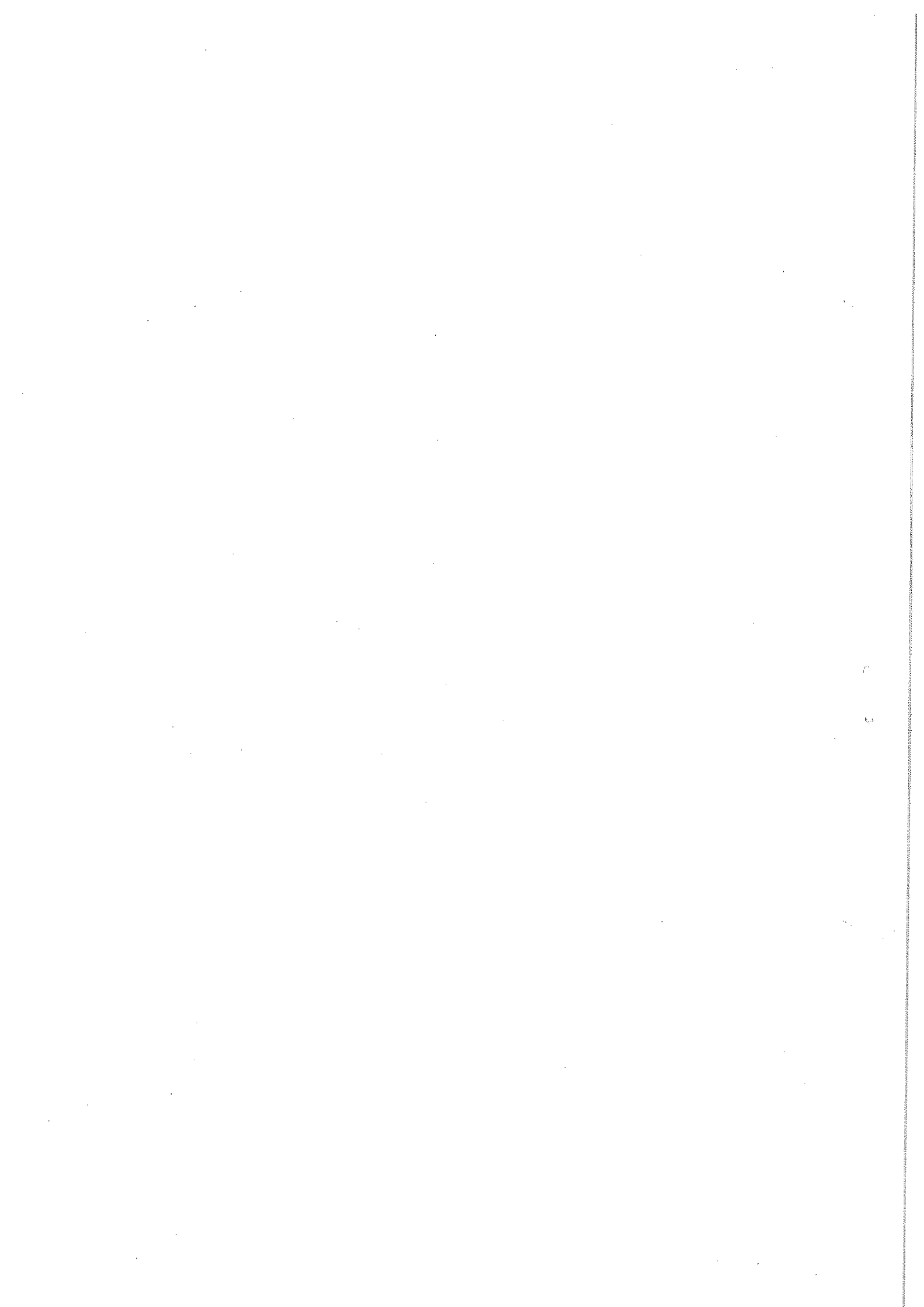
1.4 Indicate the temperature/s relevant to the following conditions. (02 marks)

a. Store frozen - .....

b. Keep cool - .....

c. Store at room temperature - .....

d. In a refrigerator - .....



2

2.1 Define the term "Public health pharmacist". (02 marks)

.....  
.....  
.....

2.2 State three (03) objectives of health promotion and preventive care in public health. (03 marks)

- I. ....
- II. ....
- III. ....

2.3 Provide three (03) activities of pharmacists in disease prevention as a public health educator. (03 marks)

- I. ....
- II. ....
- III. ....

2.4 State two (02) key roles of the pharmacist as a public health educator other than disease prevention. (02 marks)

- I. ....
- II. ....

**Part C – Structured Essay Questions (60 Marks)**

1.

1.1 State two (02) factors that need to be fulfilled in responsible self-medication. (03 marks)

1.2 Write four (04) potential risks associated with self-medication at the individual level. (04 marks)

1.3 Write three (03) roles of pharmacists for each of the following. (09 marks)

- A. Promote breastfeeding
- B. Control/ assess the use of breast milk substitutes
- C. Family planning

1.4 Briefly explain two (02) types of information needed to properly triage a patient in self-medication. (06 marks)

1.5 Briefly discuss the role of the pharmacist as a communicator and health promoter in self-medication. (08 marks)

2

2.1 List three (03) types of documents that should be maintained at a community pharmacy. (03 marks)

2.2 Write three (03) requirements of a good counselling environment in a pharmacy. (03 marks)

2.3 Write four (04) benefits of providing medication related counselling services to patients. (04 marks)

2.4 Differentiate between the patient's role and the pharmacist's role in patient counselling (08 marks)

2.5 Briefly explain the important steps in patient counseling. (12 marks)