

THE OPEN UNIVERSITY OF SRI LANKA  
DEPARTMENT OF NURSING  
ACADEMIC YEAR 2022/2023 – SEMESTER I  
BACHELOR OF SCIENCE HONOURS IN NURSING  
NGU6311 RESEARCH IN NURSING - LEVEL 6  
FINAL EXAMINATION



---

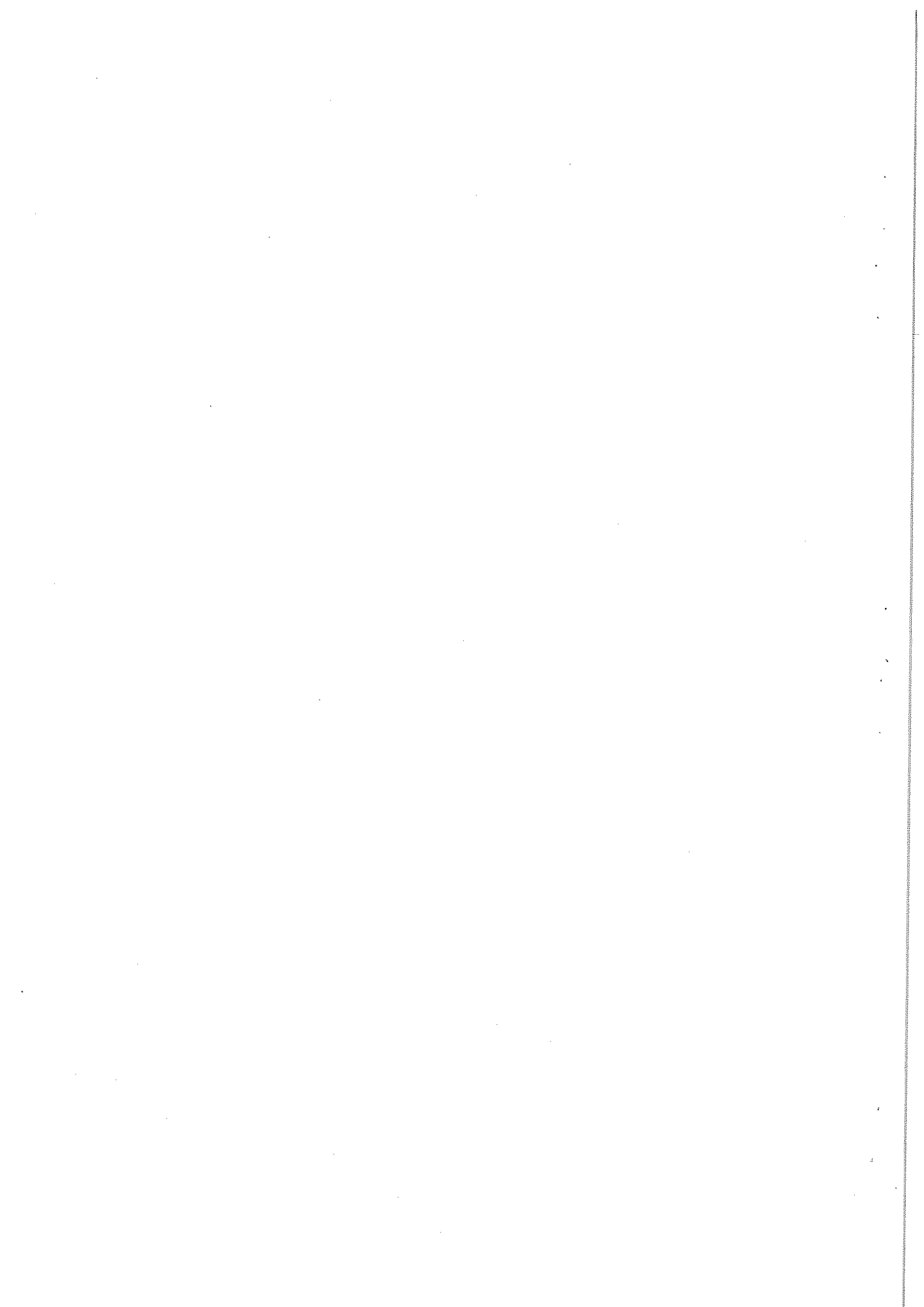
Date: 29.03.2023

Time: 1.30PM- 4.30PM

Index Number .....

Duration: 03 hours

---



**Part B - Short Answer Questions (40 Marks)****Q1:**

1.1 What is scientific inquiry? **(3 Marks)**

*(Answer should not exceed three lines)*

1.2 Write **five (05)** characteristics of scientific inquiry? **(5 Marks)**

*(Answer should not exceed five lines)*

1.3 Write **two (02)** human inquiry approaches. **(2 Marks)**

*(Answer should not exceed two lines)*

**(Total=10 Marks)**

**Q2:**

Answer the following questions using the given hypothesis of a research study. "dialysis frequency is associated with quality of life in patients receiving haemodialysis".

2.1 State **one (01)** independent and **one (01)** dependent variable of the above hypothesis.

**(2 Marks)**

*(Answer should not exceed two lines)*

	Variable type	Variable
1.	Independent variable	
2.	Dependent variable	

2.2 Write **two (02)** possible extraneous variables that could influence the above mentioned hypothesis. **(2 Marks)**

*(Answer should not exceed two lines)*

2.3 Classify the above hypothesis stating whether it is,

i) simple or complex ii) associative or causal iii) directional or non-directional iv) research or null (statistical) **(4 Marks)**

*(Answer should not exceed four lines)*

	Category	Type of hypothesis
a.	simple or complex	
b.	associative or causal	
c.	directional or non-directional	
d.	research or null (statistical)	

- 2.4 Write **two (02)** components of a hypothesis. **(2 Marks)**  
(Answer should not exceed two lines)

**(Total=10 Marks)**

**Q3:**

- 3.1 Write the **three (03)** common elements of experimental study design. **(3 Marks)**  
(Answer should not exceed three lines)
- 3.2 Write **two (02)** strengths of experimental study design. **(2 Marks)**  
(Answer should not exceed two lines)
- 3.3 Write **two (02)** weaknesses of experimental study design. **(2 Marks)**  
(Answer should not exceed two lines)
- 3.4 List **three (03)** non-experimental study designs. **(3 Marks)**  
(Answer should not exceed three lines)

**(Total=10 Marks)**

**Q4:**

Read the following section of an abstract and answer the questions given below.

Frailty is associated with numerous adverse health outcomes in older people, and women had a higher prevalence than men. The aim of this study is to investigate the association between sedentary behaviour, physical activity and frailty in community-dwelling older women.

In total, conveniently recruited 1099 community-dwelling older Chinese women (60–70 years) were included in this cross-sectional study. Sedentary behaviour and physical activity were objectively obtained using a validated triaxial accelerometer. Frailty was assessed using validated Frail Scale. Data were analysed by SPSS version 25 using Pearson correlation tests.

A significant association was found between sedentary behaviour, physical activity and the prevalence of frailty. The total moderate-to-vigorous physical activity time was significantly and negatively associated with exhaustion, weakness, slowness and low physical activity.

- 4.1 Write the research problem for the above study. **(1 Mark)**  
(Answer should not exceed three lines)
- 4.2 Write the purpose of the study. **(1 Mark)**  
(Answer should not exceed three lines)

- 4.3 Write **two (02)** strengths of convenience sampling method. **(2 Marks)**  
*(Answer should not exceed two lines)*
- 4.4 Write **two (02)** weaknesses of convenience sampling method. **(2 Marks)**  
*(Answer should not exceed two lines)*
- 4.5 Sedentary behaviour and physical activity were measured objectively in this study.
- 4.5.1 State **two (02)** strengths of bio-physiologic measurement. **(2 Marks)**  
*(Answer should not exceed two lines)*
- 4.5.2 State **two (02)** weaknesses of bio-physiologic measurement. **(2 Marks)**  
*(Answer should not exceed two lines)*

**(Total=10 Marks)**

**Part C - Short Essay Questions (30 Marks)**

- Q1:** As a nurse researcher, it is important to contribute to the development of research culture among nurses. Briefly explain **three (03)** aspects to be focused on improving research culture among nurses in Sri Lanka. **(15 Marks)**  
*(Answer should not exceed 40 lines/one and half page)*
- Q2:** Nursing characteristics, patient characteristics and nursing education are considered as important areas of research interests in the field of nursing. Briefly explain **three (03)** research problems with an example of a related research question for each of the given areas of research. **(15 Marks)**  
*(Answer should not exceed 40 lines/one and half page)*

00064