



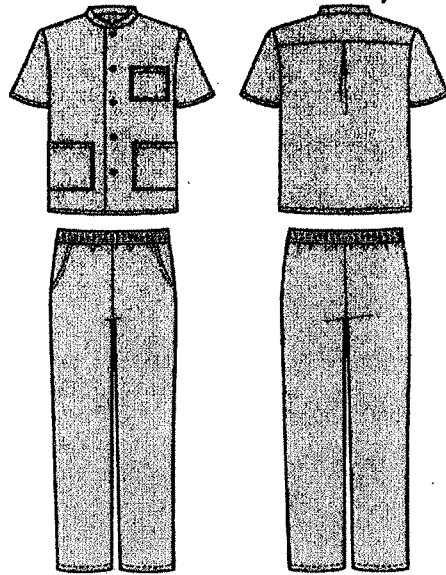
Study Programme	: Bachelor of Industrial Studies Honours
Name of the Examination	: Final Examination
<b>Course Code and Title</b>	<b>: TAI4442 Advanced Pattern Construction</b>
Academic Year	: 2021/2022
Date	: 22 <sup>nd</sup> February 2023
Time	: 0930-1230 hrs
Duration	: <b>3 hours</b>

### General Instructions

1. Read all instructions carefully before answering the questions.
  2. This question paper consists of **seven (7)** questions in **five (5)** pages.
  3. Answer five (5) questions including the question 1, which is compulsory. All questions carry equal marks.
  4. Answer for each question should be commenced from a new page.
  5. This is a Closed Book Test (CBT).
  6. Answers should be in clear handwriting.
  7. Do not use red colour pens.
  8. Write the index number in each answer script.
-

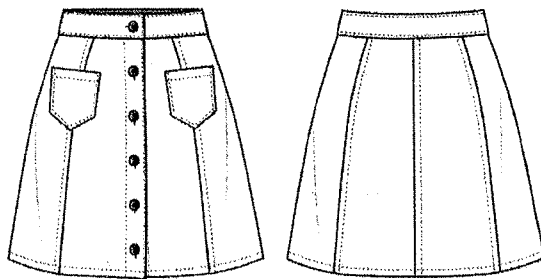
### Compulsory Question

(1) Following are a front and back views of a shirt and a trouser.



- (a) Name four (4) style features that can be changed to get different styles for this suit. (2 Marks)
- (b) Name and sketch two (2) other examples for each of the style feature you mentioned in part (a). (4 Marks)
- (c) Categorize all the measurements required to construct patterns for this shirt and the trouser as, straight measurements and girth measurements. (6 Marks)
- (d) Explain the method of constructing the pattern for the collar style shown in the above figure. (8 Marks)

(2) Following sketch shows front and back views of a lady's skirt.

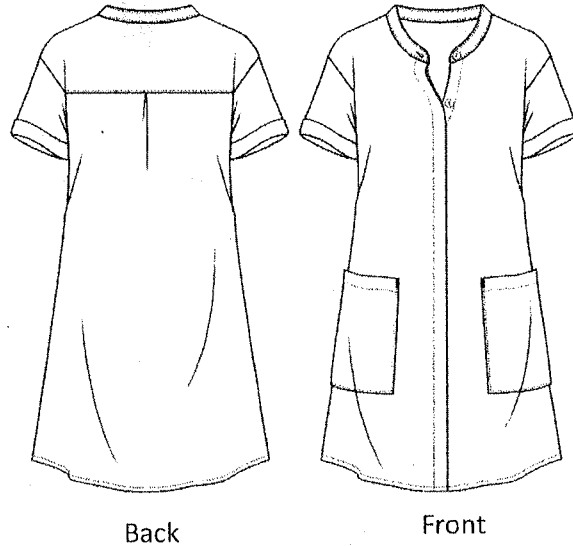


- (a) Identify the style features of this skirt and mention all the required pattern pieces for finishing the skirt. (3 Marks)
- (b) Draw rough sketches of the basic skirt front and back patterns.

Explain how basic patterns are used to develop the patterns for the skirt style shown in above figure. (17 Marks)

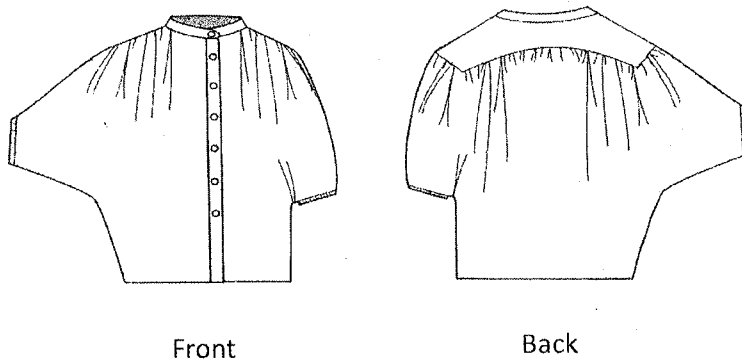
- (3) The sketch shown below is front and back views of a dress style decorated with pockets, back yoke, back pleat, Mandarin collar, and short sleeves. Assuming that the basic patterns of the front and back bodice blocks and the basic sleeve patterns are available, explain the construction steps to develop the following patterns for this dress style.

- (a) Front (5 Marks)
- (b) Back (5 Marks)
- (c) Sleeve (5 Marks)
- (d) Back yoke (5 Marks)

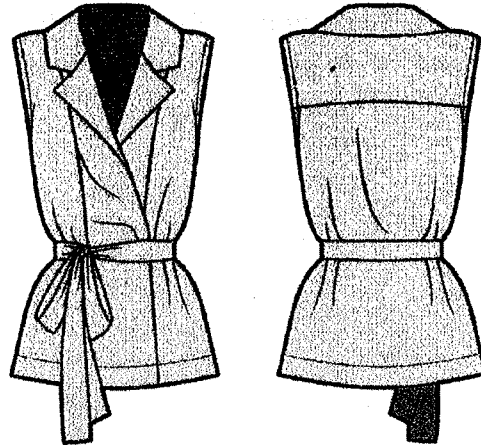


- (4) Following is a blouse style without any seam line at the armhole line. Both front and back are decorated with gathers and only the back side is having a yoke part. A placket opening is given at the front. If the basic front, back and sleeve patterns are available, explain the method of constructing the front and back patterns for this blouse style. Use rough sketches to explain the construction steps.

(20 Marks)



(5) Belted wrap style blouse with a collar is shown in the following figure.



Draw a rough sketch of a basic bodice block front pattern and explain the construction steps required to develop the pattern for the collar style shown in the above figure.

(20 Marks)

(6) Grading is the process used to get patterns for different clothing sizes from the master pattern.

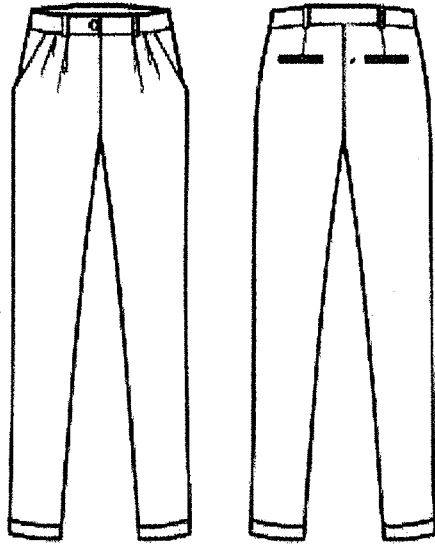
Draw a rough sketch of a front basic skirt pattern and explain the method of grading pattern for size 14, assuming that the master pattern is size 12. Use the measurement chart given below for the grading purposes.

**Measurement chart (cm)**

Size	12	14
Waist	74	78
Hip	80	84
Waist to hip	22.8	23.8
Skirt length	64	66
Width of bust prominence	18.6	18.8

(20 Marks)

(7) A pleated trouser style is shown in the following figure.



Explain the construction steps required to develop the patterns mentioned below using the **basic** trouser top and bottom patterns.

- |                    |           |
|--------------------|-----------|
| (a) Trouser Top    | (5 Marks) |
| (b) Trouser Bottom | (2 Marks) |
| (c) Waist band     | (4 Marks) |
| (d) Side pocket    | (5 Marks) |
| (e) Jetted pocket  | (4 Marks) |

