

The Open University of Sri Lanka
Master of Arts in Teacher Education
Final Examination 2005
CSE 1176: Desktop Publishing
Duration: Two Hours



Date: 17.05.2006

Time: 10.00 a.m. – 12.00 noon

Answer **FOUR** questions **ONLY**.

Q1.

- a. What do you mean by *desktop publishing*?
- b. What are the hardware and software requirements to use PageMaker?
- c. "*Parallel to learning desktop publishing, you will need to acquire knowledge with several different industries*" Do you agree with this statement? Justify your answer.
- d. How does the PageMaker has manage to remain the number-one desktop publishing program?

Q2.

- a. State whether the following statements are TRUE or FALSE.
 - i. Bitmapped images are good for representing continuous ranges of colors with soft edges.
 - ii. Printer setup is a job of PageMaker.
 - iii. Bitmapped graphics are made up of lines and vector graphics are made up of square dots called pixels.
 - iv. The HLS color schema represents the color combination using the Lightness and Saturation only.
 - v. Plug-ins are short programs that are created especially for design tasks.
- b. Briefly explain the words *tracking* and *Kerning* in the context of text editing.
- c. How do you import text into PageMaker from a MS-Word document?
Explain briefly.

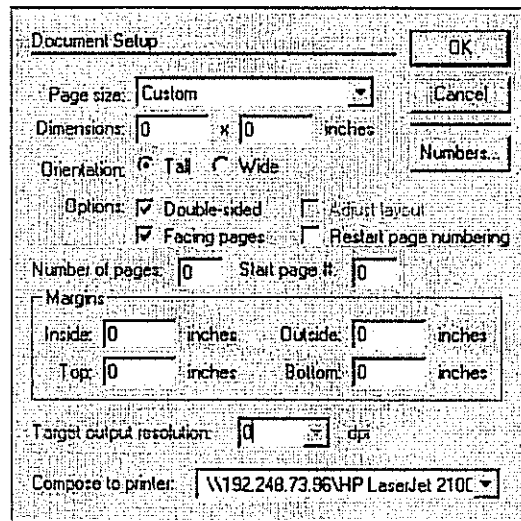
Q3.

- a.
 - i. What are plug-ins?
 - ii. How do you open '*word counter*'?
 - iii. What can you do with the word counter? Explain using an example.
- b. Write short notes on the following terms in the context of PageMaker.
 - i. Drop cap
 - ii. CMYK color schema
 - ii. Color palette
- c. What do you mean by OLE and what is its main task?

Q4.

- a.
 - i. What are *styles*?
 - ii. Explain how styles could help you as a time saver.
 - iii. What are the two methods of creating a style in PageMaker?
 - iv. What are the advantages of defining styles?
- b. What are the three-color schemes available in PageMaker?
- c. Suppose you want to create a new color named as 'mycolor' with RGB values 150,120 and 100.
 - i. What is the tool name that you can use to create a new color?
 - ii. By using the above tool, explain how you would create a new color.

Q5.



- a. By using the above figure answer the questions given below:
 - i. Explain how you would change document properties such as size, margin etc.
 - ii. Give two methods to change the page size as A4.
- b. Briefly explain the following terms with their usage.
 - i. Output resolution
 - ii. Page orientation
 - iii. Margins
- c. What is the most appropriate technique that could be used in place of drawing a graphic in PageMaker?

Q6.

a.

- i. What is a template?
- ii. What are the advantages of using templates?
- iii. Suppose you need to design a standard template in the following for all the examination papers of the Open University.

Paper size	A4
Heading	14 bold
Body text	12 normal
Paragraphs indented	0.5cm
Alignment	center.

How do you create this template?

- iv. How do you change the fonts style and size in a PageMaker document?

- b. Discuss how you would insert a Microsoft Excel chart in to your PageMaker document.

*** All Rights Reserved ***