

The Open University of Sri Lanka
Master of Arts in Teacher Education
Final Examination 2008



021

CSE1177: Internet Technology

Duration: 2 Hours

Date: 03.06.2008

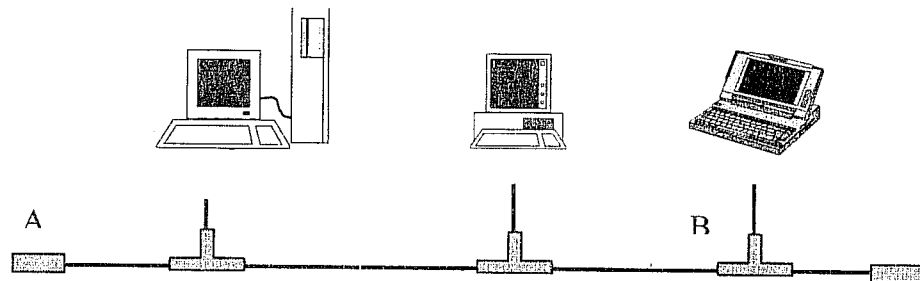
Time: 10.00 am – 12.00 noon

Answer Four Questions only.

Q1.

- i. Why do people use computer networks? Describe in your own words.
- ii. What are the types of computer systems that can adapt, Star, Ring and Hierarchical network topologies?
- iii. What are the differences between WAN and MAN?

Q2.



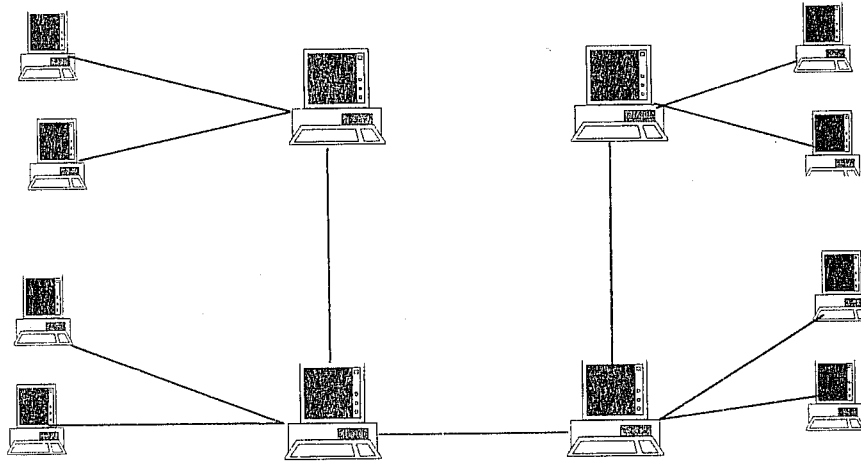
i. Use the above figure to answer questions a to c

- a. What are the components A and B?
- b. What is the network topology used in the above network?
- c. What are the limitations of the above network?

1/4

- ii. What do you understand by the term *node* in the context of computer networking?
- iii. Define the term *protocol* in the context of the Internet. Name the most commonly used protocol today for Internet communication.

iv. The following network is designed using a combination of network topologies.



What is the most suitable name for this new topology?

Q3.

- i. By means of protocol, domain and filename explain what is an URL?
- ii. What are the protocol names and default port numbers to send Emails and receive emails?
- iii. "Nowadays electronic mail system is the most popular communication method than other communication methods" Do you agree with this statement? Explain briefly.

iv. A simple email message is given below:

```
To: carl@yahoo.com
Cc: gaminiperera@ou.ac.lk
Bcc: skperera@ou.ac.lk
From: abskumara@yahoo.com
Data
Dear friends,
CSE 1177 CBT Exam will be held on 21.01.
2006
Thanks
Sk.
```

By using the above message, answer the following questions

- a. What is the email address of the sender?
- b. This email does not contain a subject, Write the message 'CSE 1177 OBT Exam' as the subject.

Q4. Use the following Figure to answer part i, ii and iii.

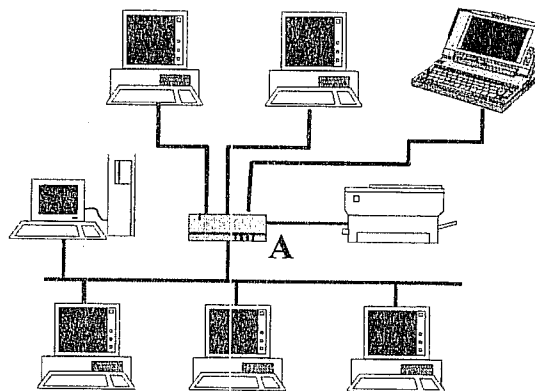


Figure: A Simple LAN

- i. What are the topologies that have been used to construct this simple LAN?
- ii. What is the purpose of having a special device "A"?
- iii. Give five examples for the device "A".

- iv. State a communication media that is not physical.
- v. State the communication media which is most suitable for both indoor and outdoor networking.
- vi. Explain the function of a modem, stating meaning of the abbreviation *modem*.

Q5.

- i) Explain three *features* of the Internet.
- ii) Explain why we need protocols for the Internet communication.
- iii) Briefly explain how TCP/IP enables internet communication using packet terminology.

Q6.

- i) Briefly explain three *services* on the Internet.
- ii) Write what is meant by following domain name extensions.
 - a) .lk
 - b) .uk
 - c) .edu
 - d) .mil
- iii) Write short notes on *the history* of the Internet.
- iv) State two ways that you can get connected to the Internet.

All Rights Reserved