

The Open University of Sri Lanka
Faculty of Engineering Technology
Department of Textile and Apparel Technology



Study Programme	: Bachelor of Industrial Studies Honours
Name of the Examination	: Final Examination
Course Code and Title	: TAI3533 Pattern Construction
Academic Year	: 2022/2023
Date	: 20 th February 2024
Time	: 1330-1630 hrs
Duration	: 3 hours

General Instructions

1. Read all instructions carefully before answering the questions.
 2. This question paper consists of **eight (8)** questions in **three (3)** pages.
 3. Answer six (6) questions including the question 1, which is compulsory.
 4. Question No. 1 carries 25 marks and question 2 to 8 carries 15 marks each.
 5. Answer to each question should be commenced from a new page.
 6. Answers should be in clear handwriting.
 7. Do not use red colour pens.
 8. Write the index number in each answer script.
-

Compulsory Question

- (1) (a) Write four different tools that are widely used by a pattern maker and explain the importance of the tool for the process of pattern construction. (4 Marks)
- (b) Name four (4) possible features that can be changed to achieve different styles for a gent's shirt. (2 Marks)
- (c) State two (2) main duties of a pattern maker in the garment industry. (2 Marks)
- (d) Write two (2) important factors that are considered when designing a garment for a person. (2 Marks)
- (e) What are the three (3) main requirements of pattern drafting? (3 Marks)
- (f) With the help of diagrams show and name six types of darts that can be seen in women's bodice block. (3 Marks)
- (g) How do you obtain the body rise measurement from a female body? (2 Marks)
- (h) What are the main three pattern pieces which are used to draft a trouser side pocket? (3 Marks)
- (i) What is the purpose of introducing seat angle to trouser pattern? (2 Marks)
- (j) Draw clear diagrams to show the following styles of shirt pockets. (2 Marks)
- (i) Patch pocket with flap
 - (ii) Pleated patch pocket
 - (iii) Seam pocket
 - (iv) Jetted pocket

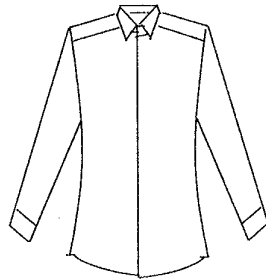
Answer any five (5) questions from the following (7) questions.

- (2) (a) What are the conditions that should be met to have accurate measurements from a female figure? (4 marks)
- (b) Body measurements can be categorised as horizontal and vertical measurements. Write five examples for each category and explain the correct method of taking each measurement from a human figure. (11 marks)
- (3) (a) Draw three (3) style variations for a skirt. (3 Marks)
- (b) What are the measurements required to construct a lady's basic skirt block? (2 marks)
- (c) Brief pattern construction steps for developing the basic skirt front pattern with rough sketches. (10 marks)

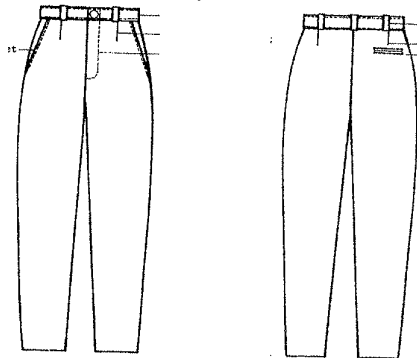
- (4) (a) Name all the required measurements to draft patterns for a lady's bodice block. (3 marks)
 (b) Write construction steps for the lady's back bodice block. Use rough sketches. (12 marks)

- (5) Explain with rough sketches the construction steps to develop patterns for the basic sleeve using the bodice block patterns. (15 Marks)

- (6) With the help of rough sketches explain the method of constructing the front pattern of the tunic shirt given below. (15 marks)



- (7) Following figure shows a front and back views of a basic trouser. Answer the following questions based on the figure.



- (a) What are the required pattern pieces to cut and sew the garment? (3 Marks)
 (b) Write the measurements required to construct patterns for the garment. (3 Marks)
 (c) With rough sketches explain the method of constructing patterns for the trouser top side (front). (9 Marks)
- (8) (a) What are the different styles of garments discussed under children's wear? (2 Marks)
 (b) Explain the drafting procedure for a boy's shirt back pattern. (Children's wear) (13 Marks)