

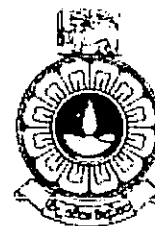
THE OPEN UNIVERSITY OF SRI LANKA

BACHELOR OF INDUSTRIAL STUDIES

FINAL EXAMINATION - 2005/2006

TTI5238 ADVANCED PATTERN CONSTRUCTION

DURATION – THREE HOURS



DATE: 27th March 2006

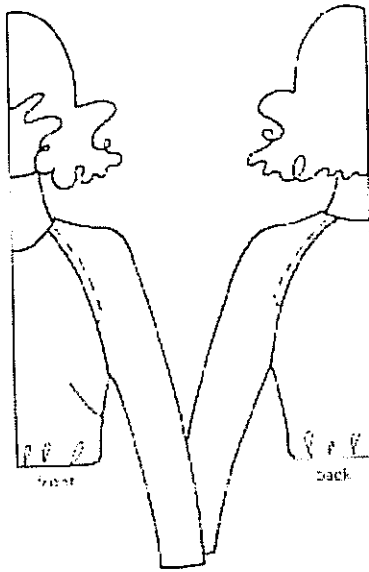
TIME: 0930-1230 HOURS

Total Number of questions = 09 Number of questions to be answered = 06

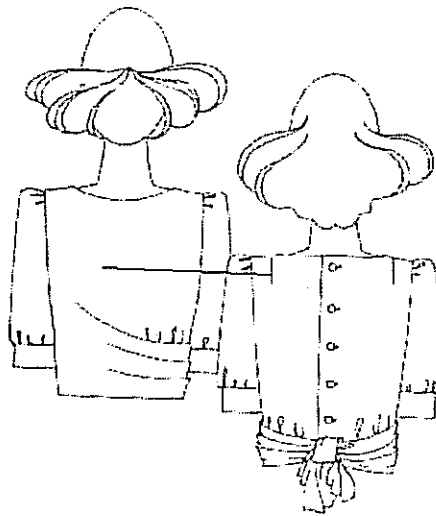
Answer Question 1, which is compulsory and additional five (5) questions.

Question 1 carries twenty-five (25) marks.

- (1) (a) What are the possible features that you can use to achieve different styles for ladies blouse?
 - (b) Show in diagrams following styles of collars.
 - (i) Shawl collar (ii) Standard rever (iii) Frilled river
 - (c) Name three different types of standing collars.
 - (d) Draw the production sketch of the camisole top.
 - (e) Name three different styles of children's trouser.
 - (f) Draw two different types of sleeve cuffs.
 - (g) What are the two main methods of dart manipulation?
 - (h) Name three different styles of front openings used in men's wear.
- (2) Following is a sketch of a basic raglan sleeve. Write construction steps with sketches to develop patterns for the raglan sleeve. Assume that you are provided with basic front and back patterns and a basic sleeve pattern.

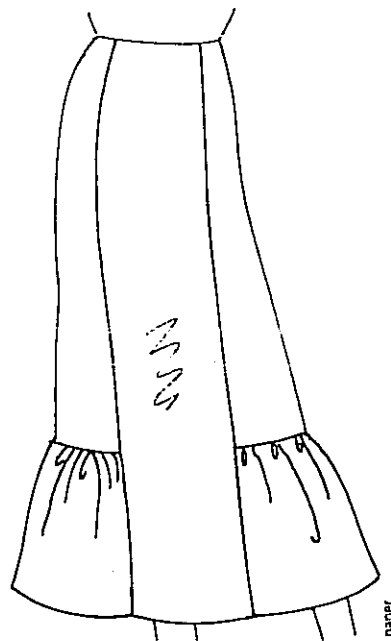


- (3) Production sketch of a draped front blouse is shown in the following figure. Assuming that you are provided with the basic front and back bodice block patterns, write construction steps to develop front and back patterns for the above style. Use rough sketches.

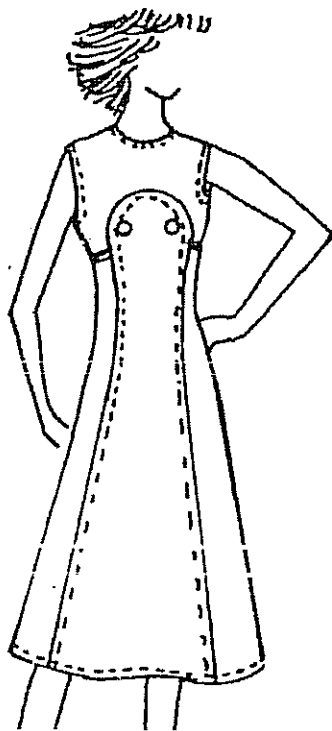


- (4) Write construction steps to develop patterns for a Classic Roll collar, when you are provided with the basic front and back patterns. Assume any measurements if required.

- (5) Following figure is a six gored long skirt with deep frill. Write construction steps to develop patterns for the skirt. Assume that you are provided with the basic front and back skirt patterns. Skirt length should be up to 5cm above the ankle and frill should be from 10 cm below the knee.



- (6) Following is a dress with curved Princess line styling. Write construction steps to develop the front pattern of the dress assuming that you are provided with the front pattern of the one-piece dress.

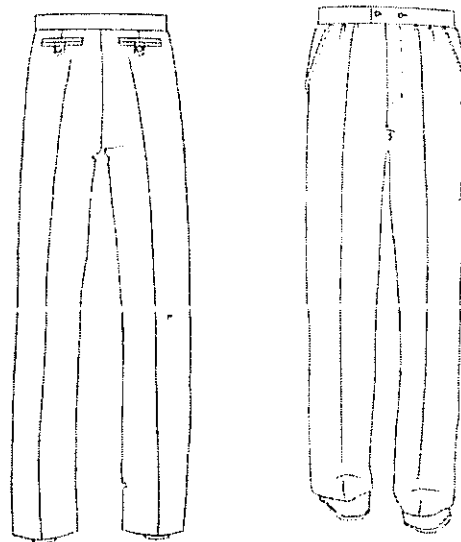


- (7) General size chart for a basic skirt is given below. Write grading procedure for size 14 and size 10. Consider master pattern as size 12.

Size	10	12	14
Waist	62	66	70
Hip	89	93	97
Waist to knee	57	58	59
Waist to hip	21.25	21.5	21.75
Width of bust prominence	18.6	19	19.4

All measurements are in centimetres.

- (8) Following is the production sketch of the pleated trouser. If you are provided with basic trouser patterns, write construction steps to develop top and bottom patterns for a pleated trouser.



- (9) Following is a sketch of a Bib front. Strap is crossed over at the back. Write the construction steps to develop patterns for the Bib front if front and back patterns are provided.

