

THE OPEN UNIVERSITY OF SRI LANKA
DIPLOMA IN INDUSTRIAL STUDIES
FINAL EXAMINATION - 2009/2010
TTI3240 PATTERN CONSTRUCTION
DURATION – THREE HOURS



DATE: 03RD MARCH 2010

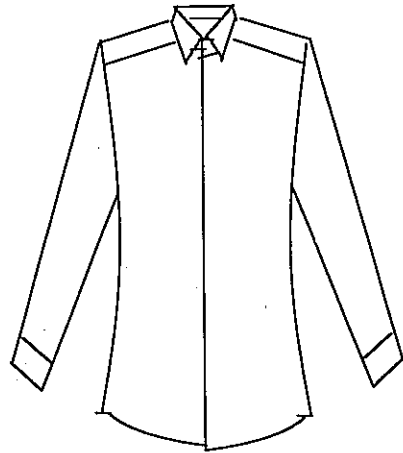
TIME: 0930-1230 HOURS

Total Number of questions = 08 Number of questions to be answered = 06
Answer Question 1, which is compulsory and additional five (5) questions.
Question 1 carries twenty-five (25) marks.

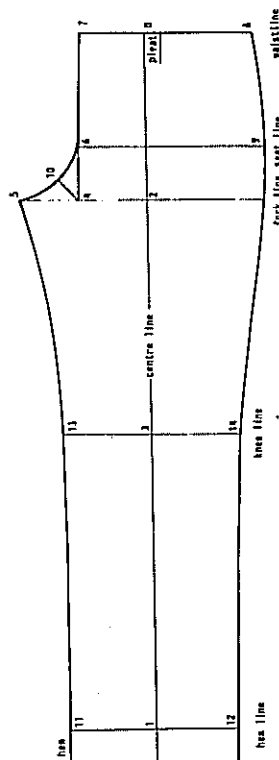
- (1) (a) Write four different tools that are widely used by a pattern maker and explain the importance of the tool for the process of pattern construction.
- (b) Name five (5) possible features that can be changed to achieve different styles for a gent's shirt.
- (c) State two (2) main duties of a pattern maker in the garment industry.
- (d) Write two (2) important conditions that have to be met before taking measurements from a human body.
- (e) What are the three (3) main requirements of pattern drafting?
- (f) With the help of diagrams show and name six types of darts that can be seen in women's bodice block.
- (g) How do you obtain the body rise measurement from a female body?
- (h) What are the main three pattern pieces which are used to draft a trouser side pocket?
- (i) What is the importance of introducing seat angle for trouser pattern?
- (j) Draw clear diagrams to show the following styles of shirt pockets.
- (i) Patch pocket with flap
 - (ii) Pleated patch pocket
 - (iii) Seam pocket
 - (iv) Jetted pocket

- (2) (a) Explain the two main methods of pattern construction. (3 marks)
- (b) What is the purpose of introducing darts to a pattern? (2 marks)
- (c) With rough sketches explain the method of constructing the back pattern of the one piece dress style. Assume that you are provided with the basic back bodice block pattern. (10 marks)
- (3) (a) What are the body measurements required to construct patterns for a basic bodice block. (3 Marks)
- (b) With rough sketches explain the correct method of measuring the above mentioned measurements. (8 marks)
- (c) Give five pattern specifications that should be mentioned in the basic bodice block back pattern. Explain the importance of each specification that you mentioned. (4 marks)
- (4) (a) List all the required measurements to draft a ladies basic sleeve pattern. (3 marks)
- (b) With rough sketches explain the method of constructing the basic sleeve pattern. Assume that you are provided with the front and back basic bodice block patterns (12 marks)
- (5) (a) Draw five different styles for a skirt. (1 Marks)
- (b) What are the measurements required to construct a ladies basic skirt block? (2 marks)
- (c) With rough sketches explain the method of taking the above mentioned measurements. (2 Marks)
- (d) With rough sketches, give pattern construction steps for developing the basic skirt front pattern. (10 marks)

- (6) With the help of rough sketches explain the method of constructing the front pattern of the tunic shirt given below. (15 marks)



- (7) (a) What are the required measurements to draft patterns for a basic trouser? (2 marks)
- (b) Following is a scaled down basic trouser top pattern. With the help of the given top pattern explain the construction steps for drafting basic trouser bottom pattern. (Use rough sketches) (10 marks)



- (c) Explain the method of constructing the fly pattern for this trouser. (3 Marks)

- (8) Following is a photograph of a ladies blouse style. Identify all the features and answer the following questions.



- (a) Name all the pattern pieces that should be constructed to make the above blouse. (2 marks)
- (b) What are the measurements required to construct above patterns for the blouse? (4 marks)
- (c) With rough sketches explain the method of constructing the right front pattern for the above blouse. (9 marks)