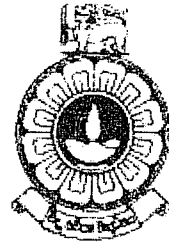


THE OPEN UNIVERSITY OF SRI LANKA
BACHELOR OF INDUSTRIAL STUDIES
FINAL EXAMINATION - 2006/2007
TTI5238 ADVANCED PATTERN CONSTRUCTION
DURATION – THREE HOURS



028

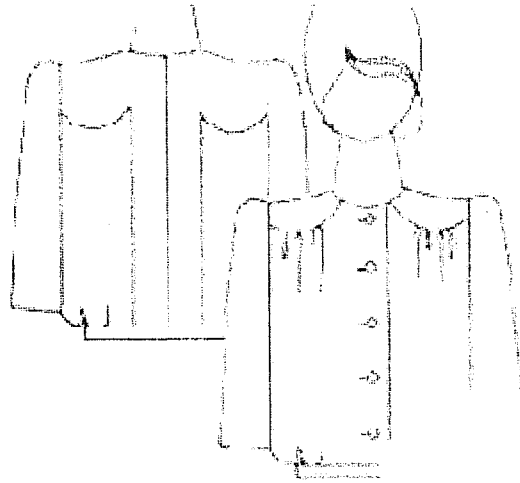
DATE: 22nd March 2007

TIME: 0930 TO 1230 HOURS

Total Number of questions = 09 Number of questions to be answered = 06
Answer Question 1, which is compulsory and additional five (5) questions.
Question 1 carries twenty-five (25) marks.

- (1) (a) Sketch two different style variations of flat collar.
(b) Draw the production sketch of a asymmetrical skirt.
(c) Write three methods by which pattern grading is done.
(d) Name and show in a diagram six main positions of darts in a bodice block.
(e) What are the two main methods of dart manipulating?
(f) Draw the production sketch of a princess line petticoat.
(g) Draw the production sketch of a camisole top.
(h) Show the following styles of neck shapes of women's bodice block in diagrams.
(i) Round neckline
(ii) Cowl neckline
(iii) Sweet heart neckline
(i) Show the following styles of sleeves in diagrams
(i) Dolman sleeve
(ii) Very flared sleeve
(j) Draw a production sketch of a bathrobe.

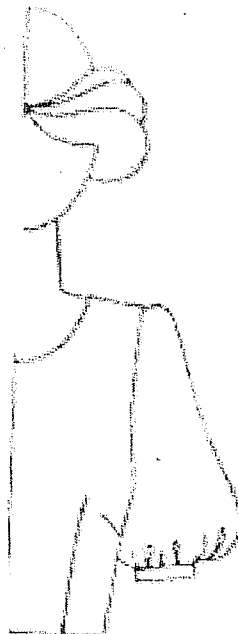
(2) Following is a production sketch of a ladies blouse given to the pattern maker.



(a) Name all the pattern pieces that should be prepared by the pattern maker in order to sew the garment. (3 marks)

(b) With rough sketches write the construction steps to develop patterns that you mentioned in part (a). Assume that you are provided with basic front and back bodice block patterns and the basic sleeve pattern. (12 marks)

(3) Following is a sketch of a sleeve with cuff.



Assuming that you are provided with basic long sleeve pattern write the construction steps to develop patterns for the sleeve shown in the figure. (15 marks)

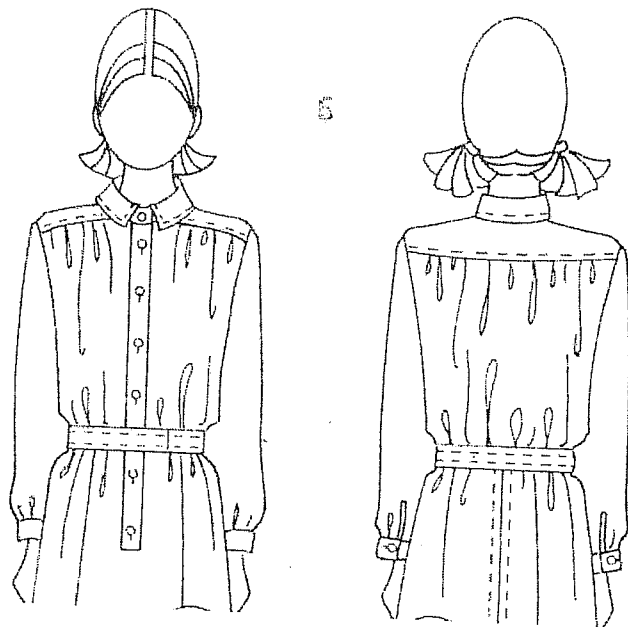
(4) Following is a sketch of a blouse with Kimono sleeve.



With rough sketches explain the construction steps to develop patterns for the Kimono sleeve.

Assume that you are provided basic front and back bodice block patterns and the basic long sleeve pattern. (15 marks)

(5) Following is a sketch of a classic shirt dress.



Write construction steps to develop patterns for the front & back dress block. Assume that you are provided basic bodice blocks and the basic skirt blocks.

(15 marks)

- (6) Grading is the method used to decrease or increase the sample size production pattern to make up patterns for a complete size range.

Explain the steps that should be followed to grade front skirt pattern for size 12 and size 16 taking the size 14 as the master pattern. Prepare the grade plan for front and back patterns.

General size chart for the skirt is given below.

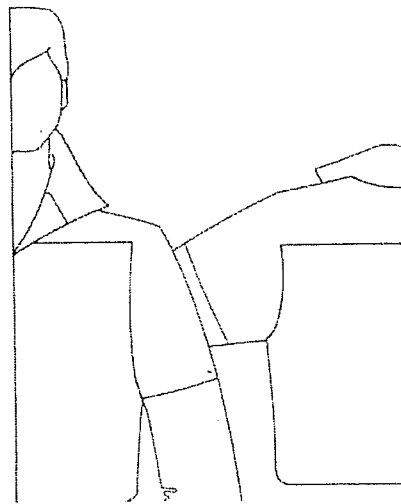
(15 marks)

General size chart for basic skirt

Size	12	14	16
Waist	66	70	74
Hip	93	97	101
Waist to knee	58	59	60
Waist to hip	21.5	21.75	22
Width of Bust Prominence	19	19.4	19.8

You are expected to draw a rough sketch of graded patterns.

- (7) Following is a sketch of a Gent's shirt.

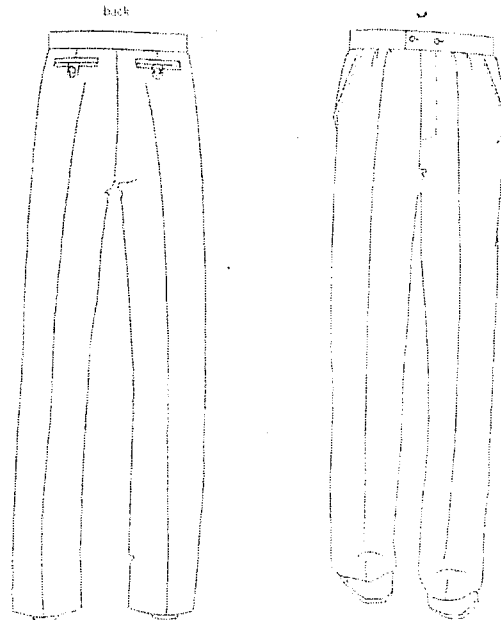


(a) Write the construction steps to develop the sleeve pattern shown in the figure. Assume that you are provided with the shirt front and back bodice patterns and the basic one piece long sleeve pattern.

(13 marks)

(b) Write two applications of above style in men's wear. (2 marks)

(8) Following is a production sketch of a pleated trouser.



(a) If you are provided with basic trouser patterns, write construction steps to develop top and bottom patterns for pleated trouser. (10 marks)

(b) Sketch patterns required for front pocket of above style. (5 marks)

(9) Following is a sketch of a shirt styled blouse. Write construction steps to develop patterns for the front, front yoke and the collar. Assume that you are provided with the basic front and back bodice block patterns.

Write pattern specifications.

(15 marks)

