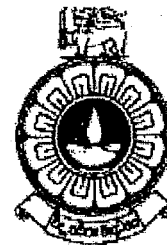


THE OPEN UNIVERSITY OF SRI LANKA
 DIPLOMA IN INDUSTRIAL STUDIES
 FINAL EXAMINATION - 2012/2013
 TTI3240 PATTERN CONSTRUCTION
 DURATION – THREE HOURS



DATE: 24TH JULY 2013

TIME: 0930-1230 HOURS

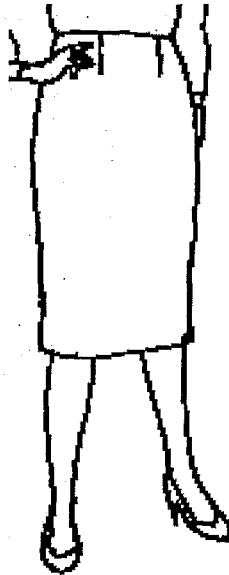
Total Number of questions =09 Number of questions to be answered = 06

Answer Question 1, which is compulsory and additional five (5) questions.

Question 1 carries twenty-five (25) marks.

- (1)
- (a) What is the purpose of preparing patterns in mass scale garment manufacturing process compared to tailoring method?
 - (b) What is the difference between “Pattern drafting” and “Pattern manipulation”?
 - (c) Why is it important to mention pattern specifications in the finished pattern?
 - (d) What is the importance of introducing seat angle for trouser pattern?
 - (e) Write two examples for girth body measurements used for constructing bodice pattern.
 - (f) How is the body rise measurement taken from a female figure?
 - (g) Write four factors that are considered during preparing size charts.
 - (h) What is the purpose of introducing darts in a bodice block pattern?
 - (i) Write four different tools that are widely used by a pattern maker and explain the importance of the tool for the process of pattern construction.
 - (j) With the help of diagrams show and name six positions of darts that can be seen in women's bodice block.
- (2)
- (a) What are measurements required to construct patterns for a basic skirt? (2 marks)
 - (b) With the help of rough sketches explain the method of taking the measurements you mentioned in part (a). (4 marks)
 - (c) What are the important measurements required to construct patterns for a basic bodice block pattern? (3 marks)
 - (d) With the help of rough sketches explain the method of taking the measurements you mentioned in part (c). (6 marks)

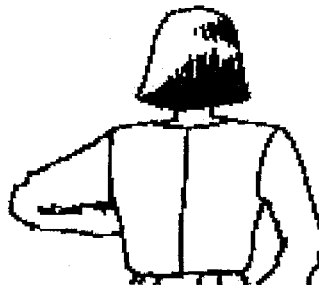
- (3) (a) Following is the front view of a basic skirt. With rough sketches explain the method of constructing the front pattern for this basic skirt. (13 marks)



- (b) Write all the necessary pattern specifications for the above drafted pattern.

(2 marks)

- (4) (a) Following is the back view of a basic bodice block. With rough sketches explain the method of constructing the back pattern for this blouse. (13 marks)

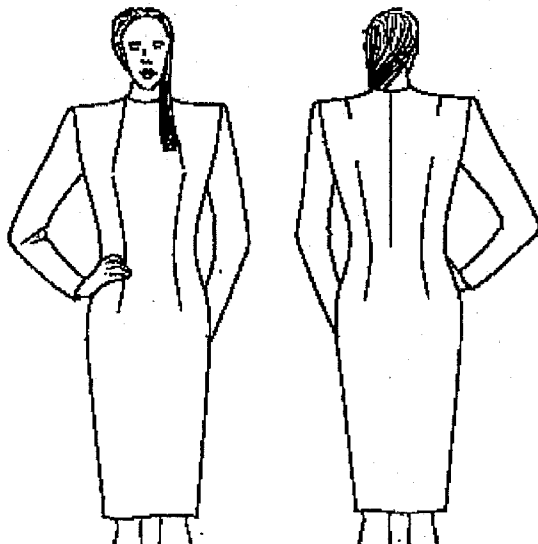


- (b) Write all the necessary pattern specifications for the above drafted pattern.

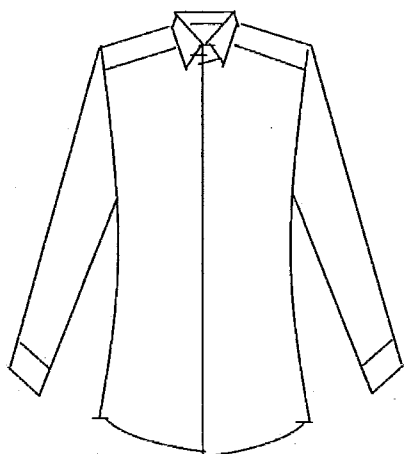
(2 marks)

- (5) (a) What are the measurements required to construct patterns for a basic sleeve pattern? (2 marks)
- (b) Explain the method of constructing the basic sleeve pattern assuming that you are provided with the basic front and back bodice block patterns. (13 marks)

-) Following is front and back view of a ladies dress. With rough sketches explain the method of constructing front and back patterns for this dress. Assume that you are provided with the basic bodice front and back patterns. (15 marks)



- (7) (a) What are the measurements required to construct front and back patterns for a gents tunic shirt? (3 marks)
- (b) With the help of rough sketches explain the method of constructing the front pattern of the tunic shirt given below. (12 marks)



- (8) (a) What are the required measurements to draft patterns for a basic trouser? (2 marks)
- (b) Explain with rough sketches the method of constructing basic trouser bottom pattern (back pattern). Assume that you are provided with the basic trouser top pattern. (13 marks)
- (9) (a) What are the different styles of garments discussed under children's wear? (3 marks)
- (b) Explain the drafting procedure for a boy's shirt back pattern (Children's wear) (12 marks)