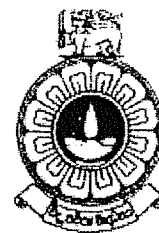


THE OPEN UNIVERSITY OF SRI LANKA
 DEPARTMENT OF TEXTILE AND APPAREL TECHNOLOGY
 BACHELOR OF INDUSTRIAL STUDIES HONOURS
 FINAL EXAMINATION- 2015/2016
 TTI3240 -PATTERN CONSTRUCTION
 DURATION: 3 HOURS



Date: 18th November 2016

Time : 0930-1230 hrs

Total Number of questions =07

Number of questions to be answered = 05

Answer Question 1, which is compulsory and additional four (4) questions.

All questions carry equal marks.

Compulsory question

- (1) (a) A Pattern maker is requested to construct patterns for a particular style of a garment. What are the two main methods that the pattern maker can follow to construct patterns. Explain these two methods highlighting the differences.

(4 Marks)

- (b) Body measurements can be categorised as follows.

- (i) Horizontal straight measurements
- (ii) Horizontal girth measurements
- (iii) Vertical straight measurements
- (iv) Vertical girth measurements.

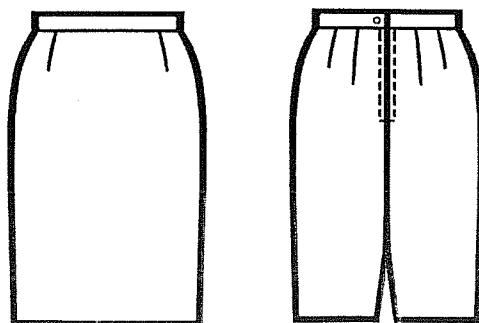
Write two (2) examples for each of these categories and explain the correct method of taking the measurements you have mentioned. You may use sketches to write your answer.

(16 Marks)

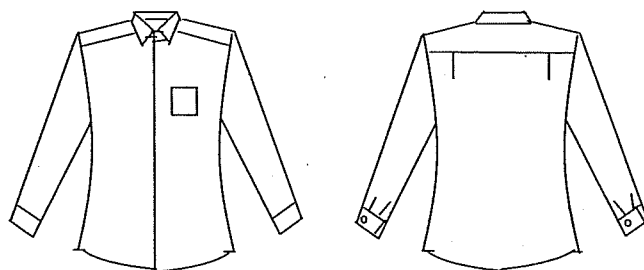
Answer any four (4) questions from following questions

- (2) Following is front and back views of a basic skirt provided for a pattern maker for a particular order. Assuming that the length of the skirt is 3 cm below the knee level, write construction steps to develop front and back patterns for this skirt style.

(20 Marks)



- (3) Patterns for a "One piece dress" can be constructed with the help of the basic bodice block patterns.
- (a) Describing the necessary construction steps draw front and back patterns of the basic bodice block. (14 Marks)
- (b) Assuming that the length of the "one piece dress" is up to the knee level, explain the method of constructing front and back patterns for a one piece dress with the help of the drafted patterns in part (a). (06 Marks)
- (4) Pattern for the basic sleeve of a women's wear is constructed with the help of the basic front and back bodice block patterns. Explain the method of constructing the basic sleeve pattern assuming that the sleeve length is up to the elbow level. (20 Marks)
- (5) Following is a production sketch of a tunic shirt. With rough sketches explain the method of constructing patterns for ;
- (a) Back of the shirt including the yoke (12 Marks)
- (b) Sleeve (08 Marks)



- (6) (a) Draw a production sketch of a basic trouser. (02 Marks)
- (b) With rough sketches, explain the method of constructing front and back patterns for the trouser you have given in part (a). (18 Marks)
- (7) Following is front and back views of a girl's dress. Explain the method of constructing front and back dress patterns for this style. (20 Marks)

