

2006/07

16/2/2007

Animal Form and Function - NBT

Part B

Question 2 is based on Figure 2 which shows a particular hormonal mechanism, followed by several hormones in their functions.

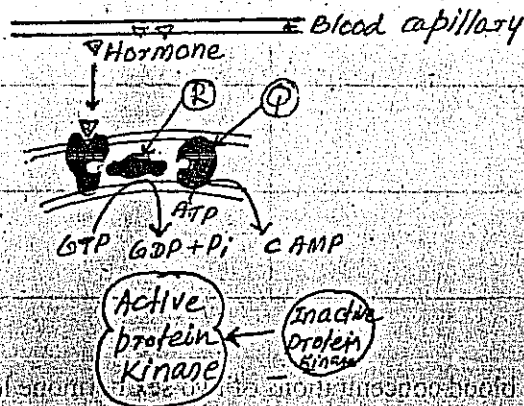


Figure 2

2.1. Identify the hormonal mechanism shown in Figure 1.

2.2. Name two hormones that follow the above hormonal mechanism (2.1) to bring about their action.

- 1. _____
- 2. _____

2.3. Name the second messenger involved in the above mechanism in 2.1.

2.4. Identify "R" and give its role in this mechanism.

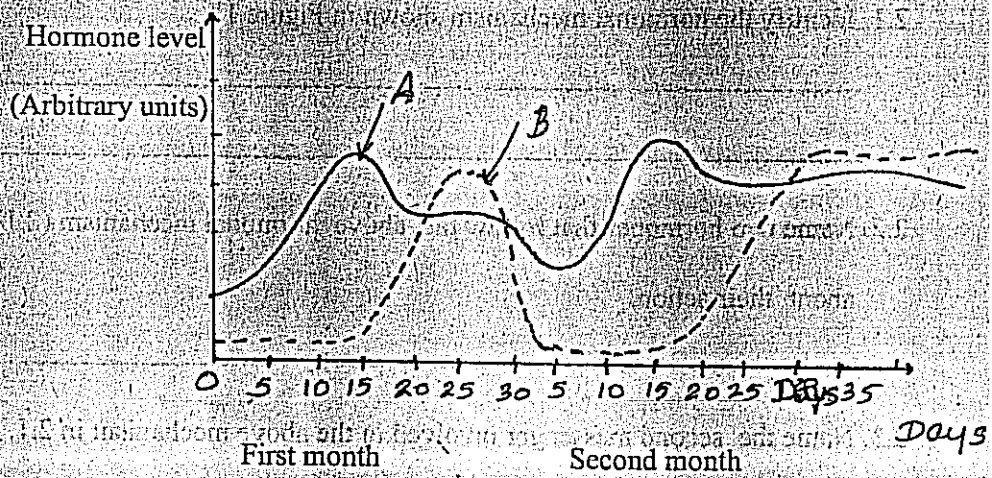
2.5. Name the enzyme "Q" and give its role in the hormonal mechanism.



2.6. Write three differences between chemical coordination and electrical coordination

	Chemical coordination	Electrical coordination
1		
2		
3		

2.7. Figure 3 shows the blood concentrations of two sex hormone levels in a woman, monitored during a period of two months



2.7.a. Identify the two hormones

A _____ B _____

b. Give reason for changes in the level of hormone B, during the period monitored

c. Write main function of the hormone A during first two weeks.

d. Write two functions of the hormone B during the last two weeks of the study period.

2.7 Synapses are classified according to either structure or function. Name the types of synapses that are

a. Structurally different

b. Functionally different
