

THE OPEN UNIVERSITY OF SRI LANKA
BACHELOR OF INDUSTRIAL STUDIES
FINAL EXAMINATION - 2012/2013
TTI5238 ADVANCED PATTERN CONSTRUCTION
DURATION – THREE HOURS



00070

DATE: 24TH JULY 2013

TIME:0930 - 1230 HOURS

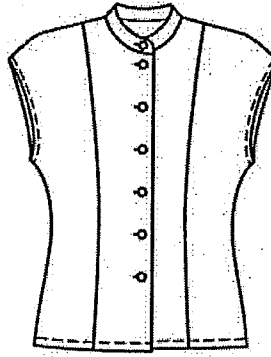
Total Number of questions =08

Number of questions to be answered = 06

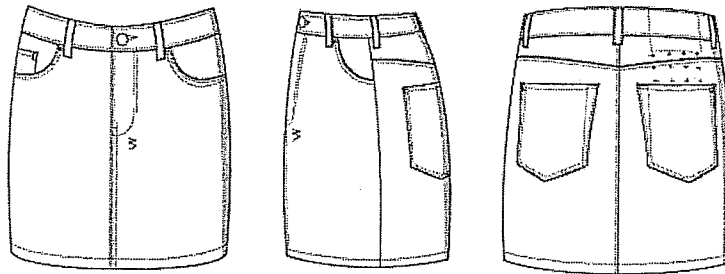
Answer Question 1, which is compulsory and additional five (5) questions.
Question 1 carries twenty-five (25) marks.

- (1) (a) Draw the production sketches of the following styles of sleeves.
- (i) Bishop sleeve
 - (ii) Puff sleeve
 - (iii) Extended sleeve with yoke
 - (iv) Basic Raglan sleeve
- (b) Draw the production sketches of the following styles of skirts.
- (i) Skirt with godets
 - (ii) A line skirt
 - (iii) Panel skirt
 - (iv) Cowl skirt
- (c) Draw the production sketches of the following styles of dresses.
- (i) Princess line dress
 - (ii) Flared peplum jacket
 - (iii) Classic over coat
- (d) What are the measurements required to construct patterns of the basic trouser?
- (e) Why do we introduce darts for a pattern?
- (f) Explain why pattern specifications should be given along with patterns.
- (g) Give rough sketches for three different styles of sleeve cuffs.
- (h) Name and show in a diagram six main positions of darts in a bodice block.
- (i) What is pattern grading?
- (j) What are the three methods of "Pattern Grading"?

- (2) Following is a line drawing of a ladies blouse with a collar and a plain front opening,



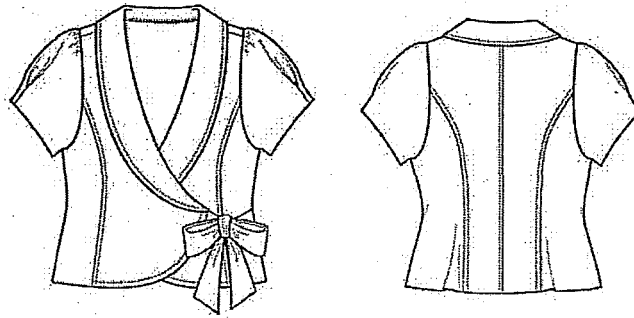
- (a) Name the collar style and the sleeve style of this blouse. (2 Marks)
- (b) Explain the method of constructing the front bodice pattern for this blouse. Assume that you are provided with the basic bodice front pattern. (8 Marks)
- (c) With rough sketches explain the method of constructing pattern for the given collar style. (5 Marks)
- (3) Following is the front, back and side view of a ladies skirt..



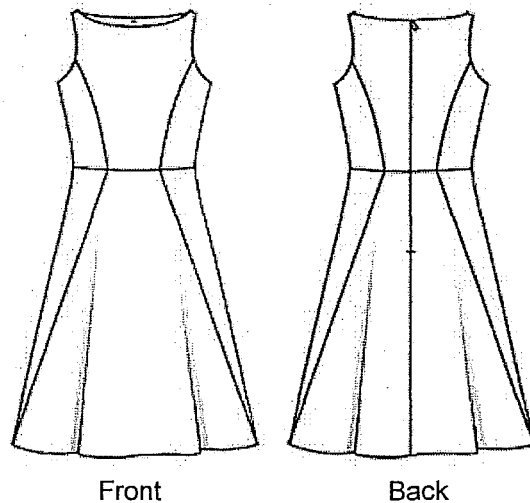
- (a) Name all the pattern pieces that are required to be constructed for stitching this skirt. (3 Marks)
- (b) If you are provided with the basic skirt back pattern, explain the construction steps to develop skirt back pattern for the given style. (6 Marks)
- (c) Explain the method of constructing patterns for the sleeve style given below. Assume that you are provided with the basic sleeve pattern. (6 Marks)



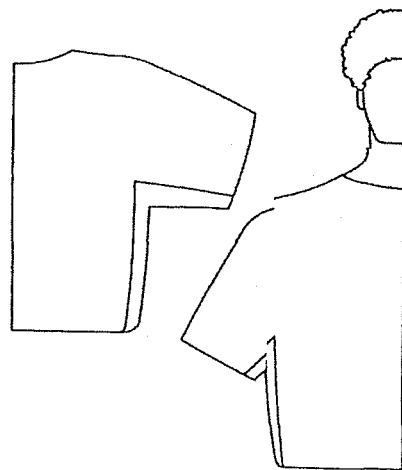
- (4) Following is a sketch of a collar style. Assuming you are provided with the basic front and back bodice block patterns, explain the construction steps to develop patterns for the given collar style. (15 Marks)



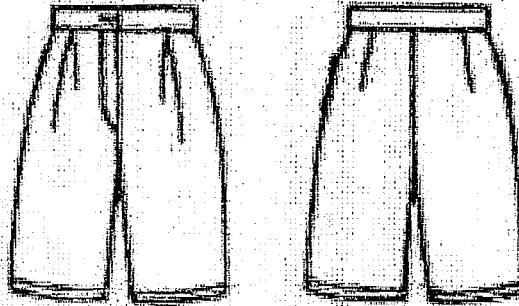
- (5) If you are provided with the one piece dress front and back patterns, explain the method of constructing front and back patterns for this dress. (15 Marks)



- (6) Following is a sketch of a men's shirt. With rough sketches explain the method of constructing front and back patterns for the shirt shown in the sketch. Assume that you are provided with the front and back kimono shirt patterns. (15 marks)



- (7) Following is a sketch of a men's short trouser.
- (a) Explain with rough sketches the method of constructing trouser top and bottom patterns starting from the basic trouser patterns. (8 marks)



- (b) Explain the method of construction the waistband pattern for this trouser. (4 marks)
- (c) Explain the method of constructing the trouser fly pattern for this trouser. (3 marks)
- (8) If size 14 is the master pattern, explain the steps that should be followed to grade front skirt pattern for size 16. Prepare the grade plan for front and back patterns of skirt. (15 marks)

General size chart for the skirt is given below.

| Size | 12 | 14 | 16 |
|---------------|------|-------|-----|
| Waist | 66 | 70 | 74 |
| Hip | 93 | 97 | 101 |
| Waist to knee | 58 | 59 | 60 |
| Waist to hip | 21.5 | 21.75 | 22 |

You are expected to draw rough sketches of graded patterns.