



DATE: 23RD AUGUST 2013

TIME:1400-1700 HOURS

This is a practical examination and you should work on the Lectra Modaris software to answer the questions. Save the work in the Compact Disk (CD) provided by the examiner and hand it over to the examiner at the end of the examination. (Save the model by naming the model as “question No.”)

Please write down your index number in the label of the CD.

Answer all the questions.

(Make sure to save the model while you are proceeding)

Question (1)

(20 Marks)

Use the following diagram as a guide to answer the questions given below.

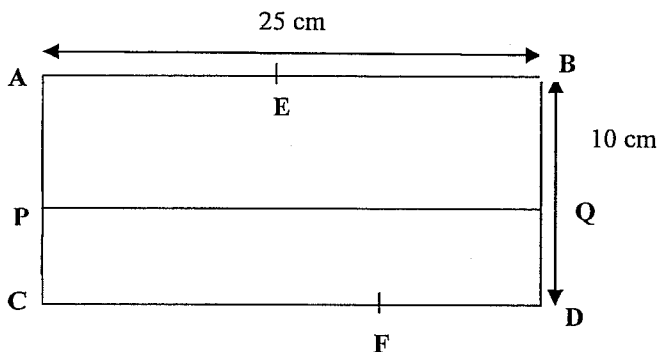


Figure 1

- Open a new model and name it as “Question 1”.
- Draw the outer shape ABCD as per the given measurements in figure 1. (2 Marks)
- Divide the line BD into 5 equal sections. (2 Marks)
- Draw a parallel line to AB through PQ, 6 cm away from point A. (2 Marks)
- Mark the point E(as in figure 1) on the line AB, 15 cm away from point A. (2 Marks)
- Mark the point F (as in figure 1) on the line CD such that the distance of EF is 12 cm. (3 Marks)
- Join E and F with a straight line. (2 Marks)
- Separate the frame into two parts through the line EF. (2 Marks)
- Symmetrise the part AEFC by considering EF as the symmetric axis. (5 Marks)
- Save the model in the Compact Disk (CD) provided.

Question (2)

(80 Marks)
00003

Figure 2 shows you a front and back view of a sleeveless princess line blouse. Use this figure as the guide to answer the questions.

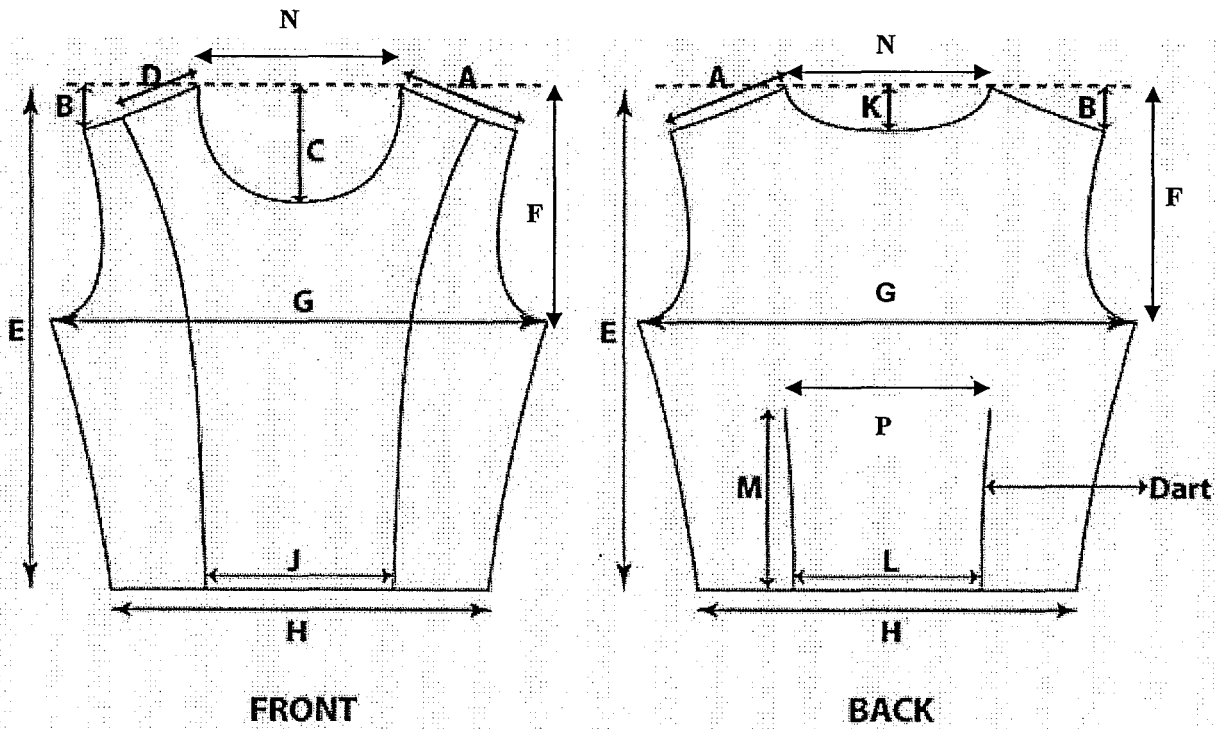


Figure 2

- Open a new model and name it as "Question 2".
- Draft the front and back patterns (full patterns) for size 12 of this blouse using the Lectra Modaris software, for the **garment measurements** given in Table 1. All measurements are in centimetres.

Measurement	Size		
	10	12	14
Length of the blouse (E)	34	35	36
Half of the waist (H)	24	26	28
Width of the back waist dart	2	2	2
Half of the bust (G)	32	34	36
Depth of armhole (F)	15	15.5	16
Shoulder drop (B)	2	2.5	3
Shoulder (A)	7	8	9
Front neck depth (C)	5.5	6	6.5
Back neck depth (K)	1.5	2	2.5
Neck width (N)	9	10	11
Length of 'D	3.5	4	4.5
Distance between princess lines at the front waist (J)	10	11	12
Distance between back darts (L)	10	12	14
Distance between dart end points (P)	10	12	14
Length of the back waist dart (M)	12	13	14

Table 1

- (c) Separate all the patterns.
- (d) Add notch marks to the end points of the dart.
- (e) Add seam allowances such that 1 cm seam allowance for straight seams and 0.5 cm seam allowance for curved seams.
- (f) Transfer the back waist dart to a position at the armhole.
- (g) Finish the dart cap.
- (h) Grade the **back** pattern for size 10 and 14, using the given measurements.
- (i) Save the model in the Compact Disk (CD) provided.