

THE OPEN UNIVERSITY OF SRI LANKA
B. Sc. DEGREE PROGRAMME - LEVEL -4
OPEN BOOK TEST-1
COURSE CODE - ZLU 2280
DATE - 6th NOVEMBER 2011

TIME - 3.00- 4.30 PM)(1 ½ HOURS ONLY)

REGISTRATION NUMBER

Answer sheet for PART- A

1.

Question Number	Answer choices			
	a	b	c	d
1.1				
1.2				
1.3				
1.4				
1.5				
1.6				
1.7				
1.8				
1.9				
1.10				
1.11				
1.12				
1.13				
1.14				
1.15				
1.16				
1.17				
1.18				
1.19				
1.20				

Part B

Answer all questions

Reg. Number

2. The following diagram (Fig 2.1) shows a section of the human digestive tract;

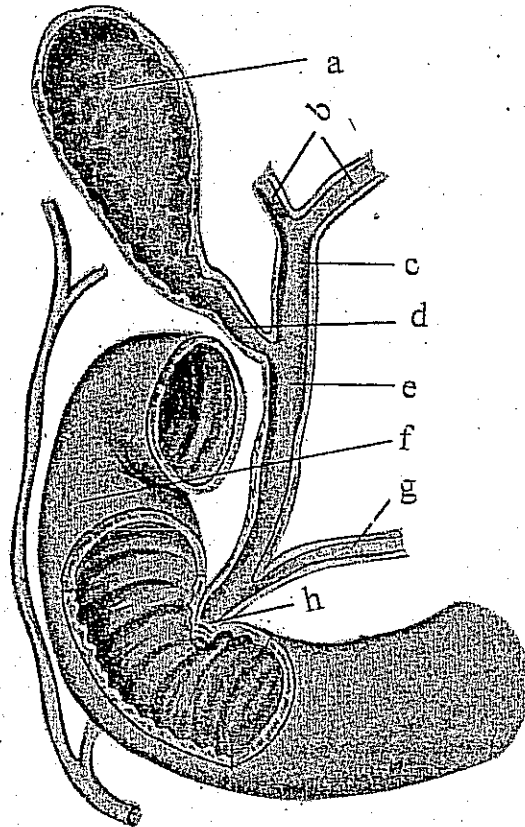


Fig 2.1

2.1 label parts a,b,c,d,e,f,g and h. in Fig 2.1 above.

2.2 Describe the function of the secretion stored in "a".

2.3 List the secretions that enter the gut at "h", and describe in brief the functions of each of them in the spaces provided.

1.

2.

3.

4.

3. Figures 3.1 and 3.2 are cross sections through structures from the human circulatory system.

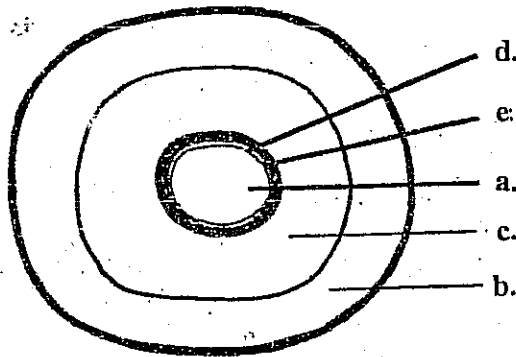


Fig 3.1

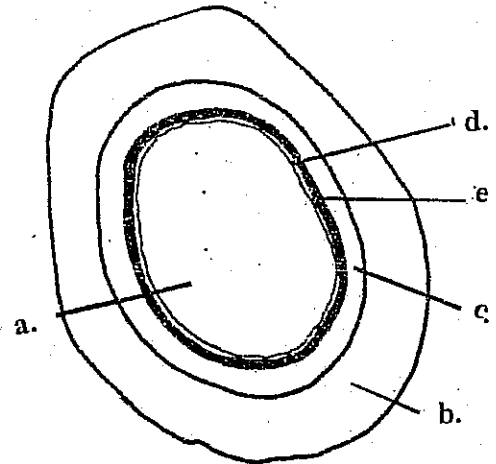


fig 3.2

3.1 Identify structures in Figure 3.1 and 3.2.

Fig 3.1

Fig 3.2

3.2 Give four reasons comparatively for your identifications of each layer named a,b,c,d and e in both figures 3.1 and 3.2 and relate their structure to their function comparatively.

Structure "a"

Structure "b"

Structure "c"

Structure "d"

Structure "e"
