

THE OPEN UNIVERSITY OF SRI LANKA
 DEPARTMENT OF MATHEMATICS AND COMPUTER SCIENCE
 B.Sc. DEGREE PROGRAMME : LEVEL 04
 NO BOOK TEST II - 2013 / 2014
 CPU 2241: DATABASE MANAGEMENT SYSTEMS
 Duration: One Hour



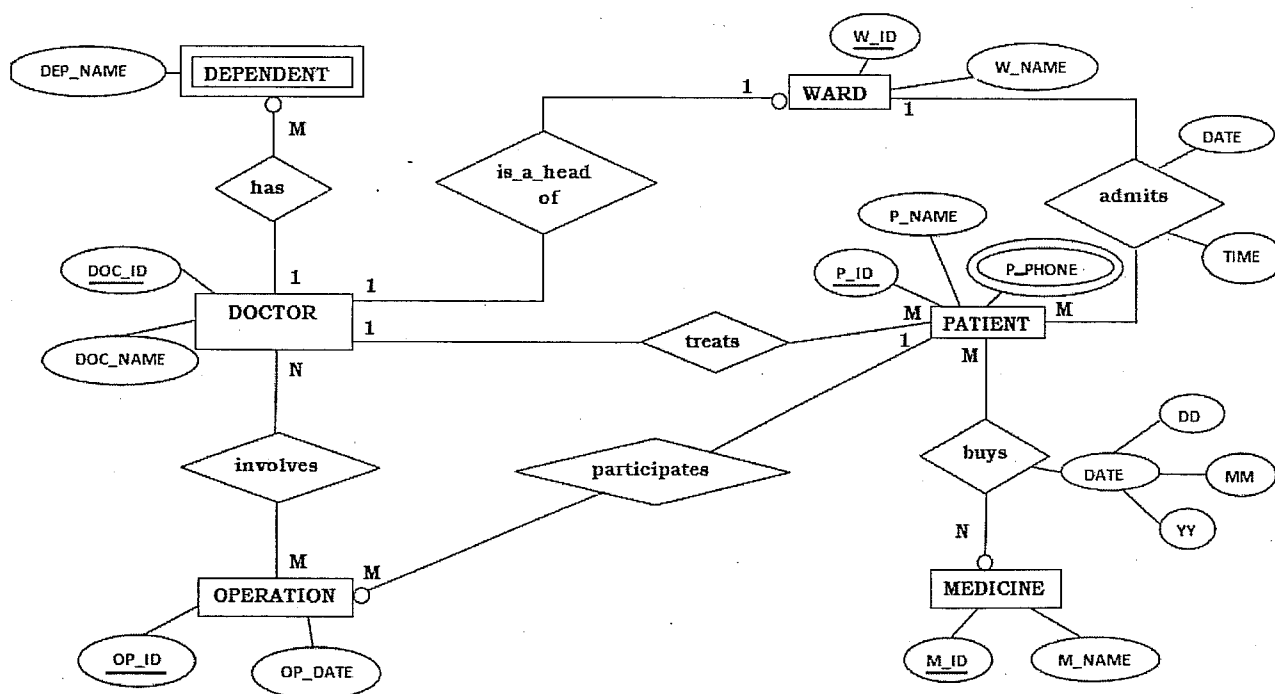
Date: 05-04-2014

Time: 10.30 a.m - 11.30 a.m

Answer ALL Questions

QUESTION 01

1. Following ER Diagram describes a small process in a Hospital. Carefully go through the ERD and draw the relevant Relational Schema for the process.



2. Briefly explain the meaning of the following terms in Database Integrity

- (a) Entity Integrity
- (b) Referential Integrity

3. Following is a Snap Shot from the 'employee' table in 'ABC_COMPANY' database. By looking at it, carefully answer the given questions.

empId	empName	empAge	empSal	dNo	prjNo
1	saman	25	55000	3	1
2	kamal	55	85000	2	1
3	dasun	40	65000	3	1
4	samachi	28	58000	1	2
5	kasun	33	NULL	2	2

Write the output of the following queries. When you write the output to a given query, show it properly as you see it in MySQL Console with correct column names (Table Structure)

- select empName from employee where empSal **not between** 54000 and 66000;
- select empAge from employee where **exists** (select * from employee where empSal **is null**);
- select empName, empAge from employee where empAge > **ALL** (select empAge from employee where empSal < 65000);
- select empId, empName from employee where empName **like** '_a_a%';
- select dNo, **max**(empSal) from employee **group by** dNo;
- select empName from employee where empName = kasun;
- select **count**(empSal) from employee;
- select empSal+1000 from employee;

----- All Rights Reserved -----