

THE OPEN UNIVERSITY OF SRI LANKA
DEPARTMENT OF MATHEMATICS AND COMPUTER SCIENCE
B.Sc. DEGREE PROGRAMME 2013/2014
NO BOOK TEST 02
CPU3147: SOFTWARE QUALITY ASSURANCE
DURATION: ONE HOUR ONLY (1 HOUR)

Date: 10th April, 2014

Time: 08.45 am to 09.45 am

Answer ALL Questions.

Q1).

- a.
 - i. What are the cost components associates with Cost of Quality?
- b.
 - i. List down three (03) attributesthat associates with team ethics.
 - ii. What are the most widely used and effective reward systems? List down all of them.
- c.
 - i. Identify the correct Quality Factors for the System Characteristics given in Table1.

System Characteristic	Quality Factors
Human Lives are effected	i. ii. iii
Real time application	i. ii. iii
Interrelated systems	i.

Table 1

Q2).

- a.
 - i. There are five levels of maturity in a quality management environment. Identify the most appropriate maturity level for the key words given in Table 2?

Key word	Maturity level (i.e L1, L2,..)
Core Competency	
Predictable	
Innovative	
Ad Hoc	
Control	

Table 2

- b. The tester's workbench is a pictorial representation of how a specific test task is performed.
 - i. All the workbenches are having common components. What are those components?

- c. Graphical view of a workbench is given in Figure 1. Answer the question based on Figure 1.

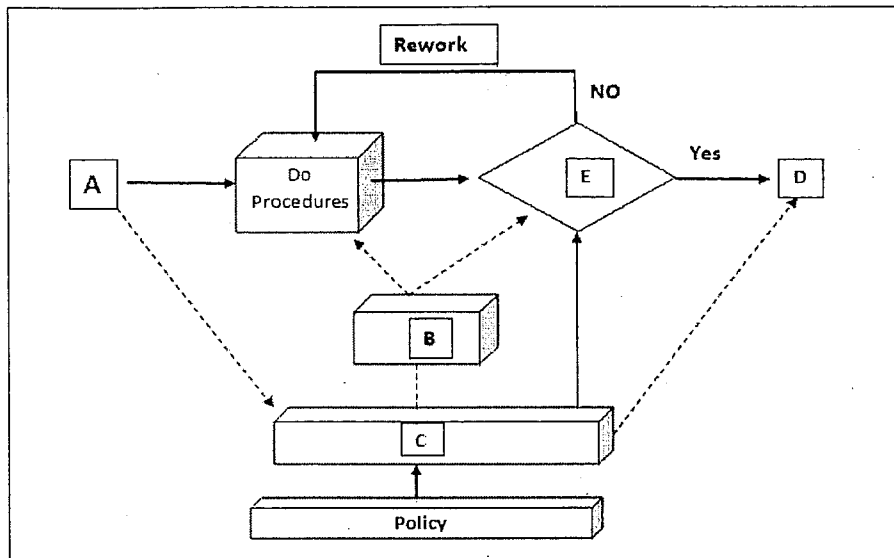


Figure 1

- i. What are the components that indicate A, B, C, D and E?

Q3).

- a.
- What is test automation? Briefly describe.
 - List down five(05) advantages of test automation.
- b.
- Identify the automatable status of the test cases given in Table 3.

Test case description	Is Automatable? (Yes/No)
Add-Hoc testing	
Stress/Load testing	
Multiple data values for the same actions	
Tests that need to be run for every build of the application	
Usability testing	

Table 3

- List down three (03) limitations of automating a project.
- c.
- List down all the types of performance testing.
 - Please give three (03) indicators that used to measure the performance requirements?

All Rights Reserved