

THE OPEN UNIVERSITY OF SRI LANKA
DEPARTMENT OF MATHEMATICS AND COMPUTER SCIENCE
B.Sc. DEGREE PROGRAMME: Level 03 – 2016/2017
CPU 1140: FUNDAMENTALS OF COMPUTERS
NO BOOK TEST - I



DURATION: ONE HOUR (1 HOUR)

Date: 29th April, 2017

Time: 9.00 am – 10.00 am

Answer Sheet

Reg. No:

Each question has 5 answers. Mark the 'X' sign for the suitable answers in the answer sheet.

1.	a	b	c	d	e
2.	a	b	c	d	e
3.	a	b	c	d	e
4.	a	b	c	d	e
5.	a	b	c	d	e
6.	a	b	c	d	e
7.	a	b	c	d	e
8.	a	b	c	d	e
9.	a	b	c	d	e
10.	a	b	c	d	e
11.	a	b	c	d	e
12.	a	b	c	d	e
13.	a	b	c	d	e
14.	a	b	c	d	e
15.	a	b	c	d	e
16.	a	b	c	d	e
17.	a	b	c	d	e
18.	a	b	c	d	e
19.	a	b	c	d	e
20.	a	b	c	d	e

21.	a	b	c	d	e
22.	a	b	c	d	e
23.	a	b	c	d	e
24.	a	b	c	d	e
25.	a	b	c	d	e
26.	a	b	c	d	e
27.	a	b	c	d	e
28.	a	b	c	d	e
29.	a	b	c	d	e
30.	a	b	c	d	e
31.	a	b	c	d	e
32.	a	b	c	d	e
33.	a	b	c	d	e
34.	a	b	c	d	e
35.	a	b	c	d	e
36.	a	b	c	d	e
37.	a	b	c	d	e
38.	a	b	c	d	e
39.	a	b	c	d	e
40.	a	b	c	d	e

For Examiner's use only

Correct answers

Percentage

%

The Open University of Sri Lanka
B.Sc. Degree Programme – Level 03
Department Of Mathematics & Computer Science
No Book Test I – 2016/2017
CPU1140 : Fundamentals of Computers

Registration No:

Duration: **One hour only (1 hour)**

Date: 29.04.2017

Time: 9.00 a.m. – 10.00 a.m.

Instructions

This paper contains 40 multiple choice questions (MCQ). Each question has 5 answers. Mark 'X' for the suitable answer in the answer sheet.

DO NOT remove this question paper from the Examination Hall.

Answer all questions

1. Computer is a manmade electronic device that can process _____ into _____.

- (a) input, output
- (b) data, instructions
- (c) information, knowledge
- (d) input, output
- (e) data, information

2. In the computer characteristics, the term '**GIGO**' is associated with

- (a) Memory (b) Versatility (c) Accuracy (d) Reliability (e) Diligence

3. There are five generations of computers based on the type of technology used in the computer construction as given below.

- 1. Integrated Circuits
- 2. Microprocessors
- 3. Vacuum Tubes
- 4. Artificial Intelligence
- 5. Transistors

What is the order of their appearance in history?

- (a) 1,2,3,4,5 (b) 3,4,5,2,1 (c) 1,2,3,4,5 (d) 3,5,1,2,4 (e) 1,2,4,3,5

4. In banking, railways etc., which computers are used?
- (a) Minicomputer
 - (b) Microcomputer
 - (c) Mainframe
 - (d) Supercomputer
 - (e) Semicomputer
5. Which of these is not designed to be portable?
- (a) Notebook computer
 - (b) PDA
 - (c) Laptop computer
 - (d) Minicomputer
 - (e) Mobile Computer
6. The central processing unit (CPU) consists of
- (a) Input, output and processing
 - (b) Control unit, Primary storage and secondary storage
 - (c) Control unit, arithmetic-logic unit and primary storage
 - (d) Control unit, processing and primary storage
 - (e) Ports, microprocessor and secondary storage
7. How many kilobytes are equivalent to one megabyte?
- (a) About 100
 - (b) About 1000
 - (c) About 10000
 - (d) About 100000
 - (e) About 1000000
8. What is the responsibility of the logical unit in the CPU of a computer?
- (a) To produce result
 - (b) To compare numbers
 - (c) To control flow of information
 - (d) To do math's works
 - (e) All of the above
9. Which component is **unlikely** to find as part of a motherboard?
- (a) ROM
 - (b) CPU
 - (c) CMOS memory
 - (d) CD-ROM
 - (e) Expansion slots

10. Arithmetic and Logical Unit (ALU) can do:

- (a) Logical Operations
- (b) Mathematical Operations
- (c) Control Operations
- (d) Both (a) and (b)
- (e) Both (b) and (c)

11. Which of the following is an invalid type of memory?

- (a) RAM
- (b) PRAM
- (c) ROM
- (d) EPROM
- (e) EAROM

12. Which of the following is the **valid** measurement unit of memory?

- (a) GB
- (b) MB
- (c) kB
- (d) All
- (e) None

13. This device stores data by magnetizing tiny spots on a metal disk.

- (a) CD-ROM disk drive
- (b) Hard disk drive
- (c) USB Flash Drive
- (d) DVD disc drive
- (e) Printer Drive

14. The keyboard converts typed in characters to _____ code

- (a) ANSI
- (b) ASCII
- (c) EBCDIC
- (d) Decimal
- (e) Binary

15. The total number of function keys in a computer keyboard is:

- (a) 12
- (b) 8
- (c) 14
- (d) 10
- (e) 6

16. By pressing which key we can move to the beginning of a page?

- (a) Window Key
- (b) Shift Key
- (c) Tab Key
- (d) Home Key
- (e) Page Up Key

17. What is the key combination for typing the character 'A' using the keyboard?

- (a) ALT + a
- (b) CTRL + a
- (c) SHIFT + a
- (d) TAB + a
- (e) Windows + a

18. In comparison to a traditional mouse, a newer type of mouse uses _____ to detect movement.
- (a) microwave signals
 - (b) coaxial cable
 - (c) reflected light
 - (d) a touchpad space
 - (e) a rolling ball
19. A touchpad responds to:
- (a) light
 - (b) pressure
 - (c) clicking
 - (d) heat
 - (e) Finger print
20. Among the following devices, what is the best suited input device to use with CAD applications?
- (a) Wired glove
 - (b) Fiber optic sensor
 - (c) 3Dconnexion
 - (d) Mouse
 - (e) Haptic Devices
21. A paddle is a game controller with a round wheel and one or more fire buttons, where the wheel is typically used to control the movement of the _____ along one axis of the video screen.
- (a) player object
 - (b) background objects
 - (c) main menu
 - (d) all objects
 - (e) none of the above
22. A _____ is used to read handwritten or printed text to make a digital image that is stored in memory.
- (a) printer
 - (b) laser beam
 - (c) scanner
 - (d) touchpad
 - (e) light gun
23. OCR stands for:
- (a) Optical coding recognizer
 - (b) Ostensibly characterized reader
 - (c) Original character reader
 - (d) Only character reader
 - (e) Optical character recognition
24. Until computer recognizing handwriting, an input device must:
- (a) Store the information in secondary storage
 - (b) Optimize the information
 - (c) Show the information on a screen
 - (d) Digitize the information
 - (e) Decode the information

25. _____ can interpret voice data into words that can be understood by the computer.

- (a) Speech input hardware
- (b) Talking software
- (c) Word recognition software
- (d) Speech recognition software
- (e) OCR software

26. A system that synchronizes hardware and software to produce electronic tones is a

- (a) MIDI (b) FITALY (c) Microphone (d) Speech Recognition (e) OCR

27. What is not an application of a laser rangefinder?

- (a) Military (b) 3-D Modeling (c) Forestry (d) Sports (e) Medical Imaging

28. The display size of a monitor is measured:

- (a) Diagonally
- (b) Horizontally
- (c) Vertically
- (d) From center to the furthest corner
- (e) All of the above

29. An advantage that LCD monitors have over CRT monitors is that LCDs are:

- (a) Only used on portables
- (b) More difficult to steal since they are considerably larger
- (c) Less expensive
- (d) Less bulky and lighter-weight
- (e) More expensive

30. What is **WRONG** with regards to Speakers and Headphones?

- (a) Speakers and headphones are output devices for audio signals.
- (b) Headsets typically have only one speaker like a telephone, and come with two microphones.
- (c) Audio support of a computer includes ports that allow input and output of audio signals.
- (d) The audio card has an amplifier to power headphones and external speakers.
- (e) A headset is a headphone combined with a microphone.

31. A text-to-speech (TTS) system

- (a) converts normal language text into machine language.
- (b) converts machine language text into normal language.
- (c) converts printed text into normal language text.
- (d) converts speech into normal language text.
- (e) converts normal language text into speech.

32. An advantage that impact printers have over nonimpact printers is that impact printers:

- (a) are quieter than nonimpact printers
- (b) can print multipart forms
- (c) are much less expensive
- (d) are smaller than nonimpact printers
- (e) can print large fonts

33. In a laser printer, what creates electrical charges on a drum that then attracts ink to those areas?

- (a) Laser beam
- (b) Magnetic beam
- (c) Digitized beam
- (d) Ion-charged beam
- (e) Color beam

34. Engineering blueprints are typically printed on a:

- (a) laser printer
- (b) scanner
- (c) digitized tablet
- (d) plotter
- (e) Barcode reader

35. Following are the seven steps involved in the laser printing process. Select the ordered choice.

- (a) Exposing, Raster Image Processing, Charging, Developing, Fusing, Cleaning, Transferring
- (b) Raster Image Processing, Charging, Exposing, Developing, Transferring, Fusing, Cleaning
- (c) Raster Image Processing, Exposing, Charging, Developing, Fusing, Cleaning, Transferring
- (d) Exposing, Raster Image Processing, Transferring, Developing, Fusing, Cleaning, Charging
- (e) Raster Image Processing, Exposing, Charging, Developing, Transferring, Fusing, Cleaning

36. A USB allows a user to:

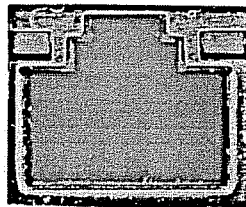
- (a) add hardware devices without opening the box.
- (b) add hardware through more advanced expansion slots.
- (c) install software in a matter of seconds.
- (d) add an additional monitor and printer simultaneously.
- (e) add the hard disk of the computer.

37. The PS/2 connector is used for connecting some keyboards and mice to a PC compatible computer system. What are the respective colors associated with each device?

- (a) green, purple
- (b) pink, green
- (c) purple, green
- (d) purple, pink
- (e) green, pink

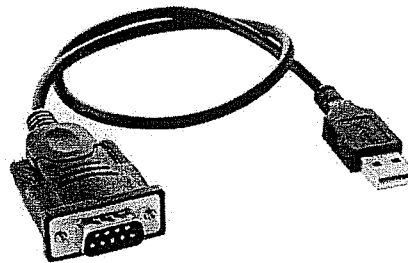
38. Which of the following ports shown in the Figure?

- (a) Parallel port
- (b) PS/2 port
- (c) DVI port
- (d) Ethernet port
- (e) USB port



39. Two types of terminals are included in the edges of the cable as shown in the figure. Identify the ports in the computer that the cable will be connected from left to right.

- (a) USB, Parallel
- (b) Serial, USB
- (c) USB, Serial
- (d) Parallel, USB
- (e) Parallel, Serial



40. Which one of the following statements does not hold a true fact about 'fireWire'?

- (a) A single FireWire port in a computer can support up to 65 devices.
- (b) It is a serial bus interface standard for high-speed communications and real-time data transfer.
- (c) A fireWire make it possible to connect devices that would not have operated feasibly over slower serial connections.
- (d) It is a high-speed, hot-swappable interface.
- (e) A single FireWire port in a computer can support up to 63 devices.

All Rights Reserved