

DATE: 05TH SEPTEMBER 2014

TIME:1400-1700 HOURS

This is a practical examination and you should work on the Lectra Modaris software to answer the questions. Save the work in the Compact Disk (CD) provided by the examiner and hand it over to the examiner at the end of the examination. (Save the model by naming the model as “question No.”)

Please write down your index number in the label of the CD.

Answer all the questions.

******(Make sure to save the model while you are proceeding)*

Question (1)

(15 Marks)

Shown below (figure 1) is a sketch of a one piece collar of a gent's shirt. Use this diagram as a guide to answer the questions given below. All the measurements are in centimetres.

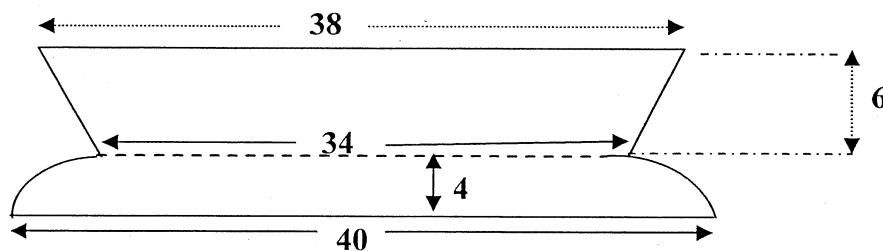


Figure 1

- Open a new model and name it as “Question 1”.
- Draft the collar pattern as per the given measurements in figure 1.
- Add 1 cm seam allowance for the pattern.
- Save the model in the Compact Disk (CD) provided.

Question (2)**(85 Marks)**

Figure 2 shows a front and back view of a one piece dress

- (a) Open a new model and name it as "Question 2".
- (b) Draft the front and back patterns (full patterns) for size 12 of this dress using the Lectra Modaris software, for the **garment measurements** given in Table 1. (All the measurements are in centimetres.) Use the technical drawing given in Figure 3 as a guide to draft patterns.
- (c) Add seam allowances such that 1 cm for straight seams and 0.5 cm for curved seams.
- (d) Grade the **back** pattern for size 10 and 14, using the given measurements.
- (e) Save the model in the Compact Disk (CD) provided.

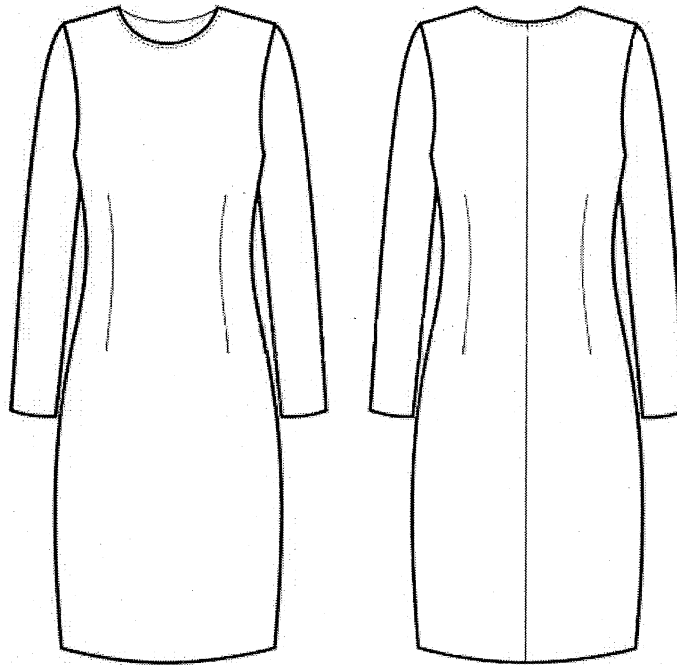


Figure 2: Production sketch

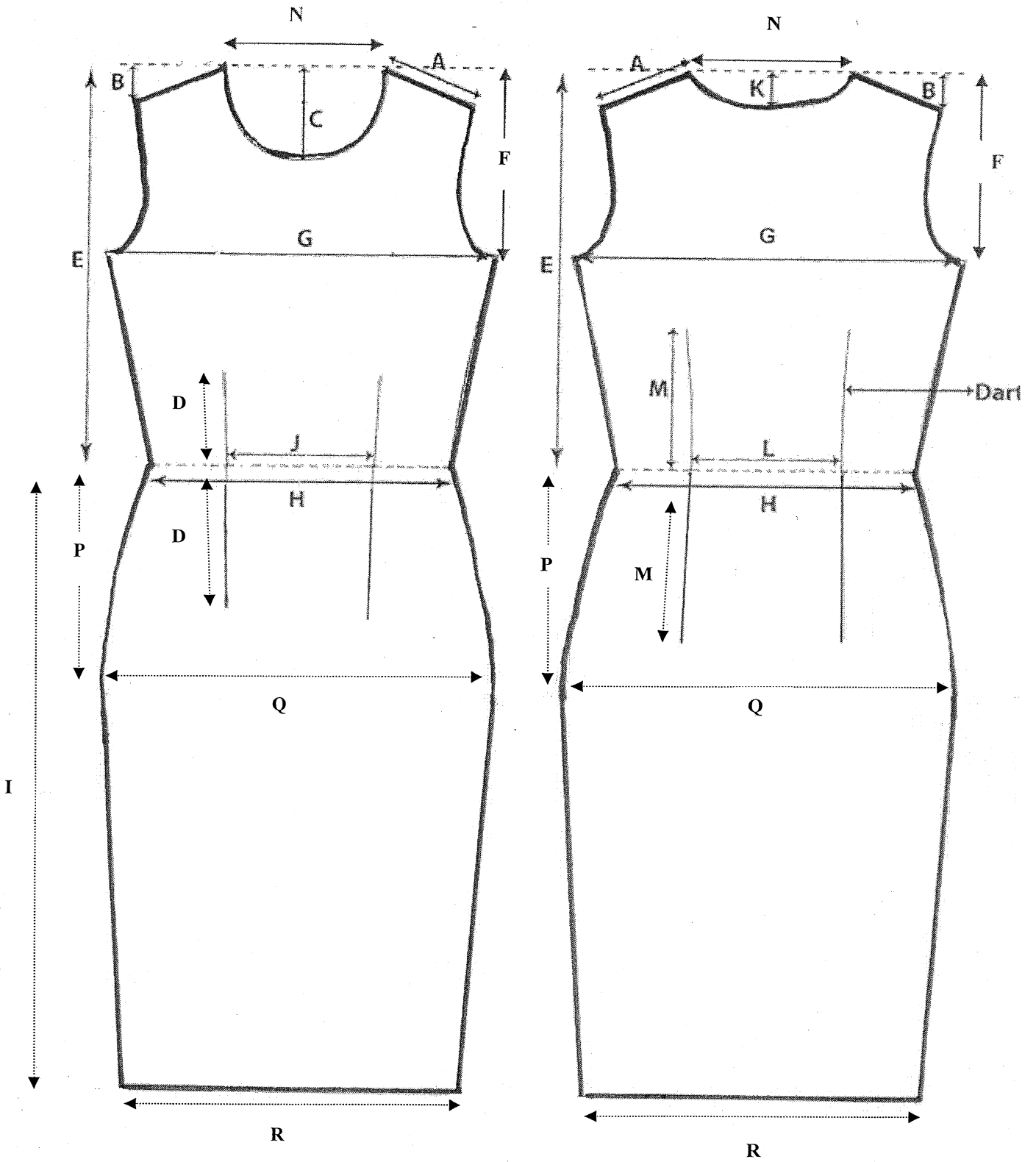


Figure 3: Technical Drawing

Measurement	Size		
	10	12	14
Width of the front and back waist darts	2.5	2.5	2.5
Shoulder (A)	7.4	8.4	9.4
Shoulder drop (B)	2	2.5	3
Front neck depth (C)	5	5.5	6
Length of the front waist dart (D)	12	13	14
High point of shoulder to actual waist level (E)	35	36	37
Depth of armhole (F)	15	15.5	16
Half of the bust (G)	32	34	36
Half of the waist (H)	24	26	28
Waist to hem (I)	57	58	59
Distance between front darts (J)	10	12	14
Back neck depth (K)	1.5	2	2.5
Distance between back darts (L)	10	12	14
Length of the back waist dart (M)	12	13	14
Neck width (N)	9	10	11
Waist to hip (P)	19	20	21
Half of the Hip (Q)	28	30	32
Width of front and back hem (R)	26	28	30

Table 1: Garment Measurements